

Richard Burton Theatre

Technical Specifications

Last Updated APRIL 2020



Venue Contacts:

Venues Manager

Janet Smith 02920 391376 Janet.Smith@rwcmd.ac.uk

Technical Operations Manager

Leigh Kirk-Harris 02920 391383 Leigh.Kirk-Harris@rwcmd.ac.uk

Technical Operations Department

02920 391383 Tech@rwcmd.ac.uk

FOH Manager

Tracey Bishop 02920 391311 Tracey.bishop@rwcmd.ac.uk

Box Office

02920 391391 Boxoffice@rwcmd.ac.uk

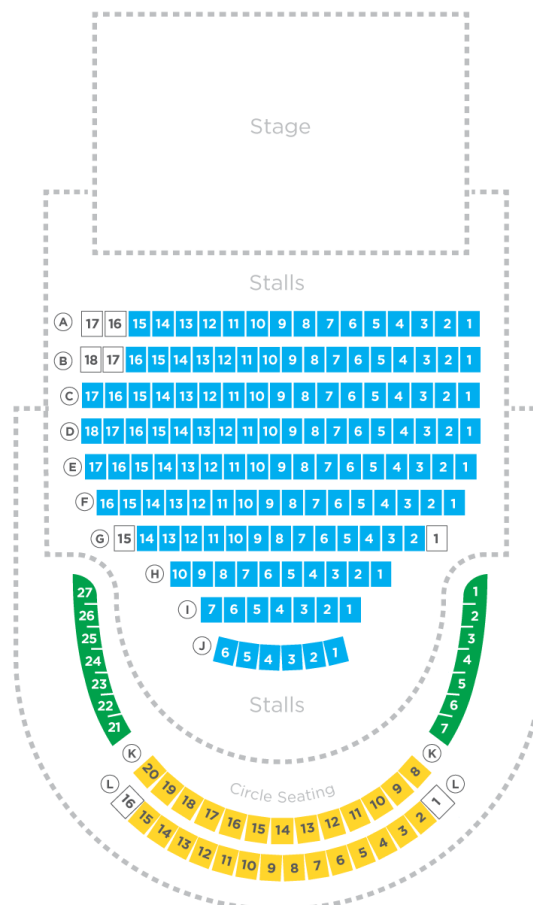
Main Switchboard

02920 392854

Introduction to the space:

Opened in June 2011, The Richard Burton Theatre is Part of the Royal Welsh Colleges new £22.5 Million Suite of Facilities. It has a proscenium Arch Stage with a Courtyard Style Auditorium Holding up to 180 patrons.

Seating Plan:



RWCMD House Rules

Our aim is for you and your company to have an enjoyable and successful visit. To ensure this, we would appreciate you following the guidelines below:

The following provides the framework within which RWCMD operates, to ensure the safety and well-being of all in the building:

All employees, visitors and contractors must at all times take reasonable care for the health and safety of themselves and others. They must co-operate fully with RWCMD in order to ensure safe working practices and compliance with statutory licensing and Health & Safety requirements.

For clarity, “backstage” refers to all areas of the theatre not open to the public.

Whilst every effort is made to maintain security, the Royal Welsh College of Music & Drama accepts no liability for the loss or theft of personal belongings left on site.

Visiting Companies/artists are advised to keep their dressing rooms locked at all times.

Security of your own personal property is your own responsibility. Visiting company members are advised to keep their dressing rooms locked when unoccupied.

Guests are not permitted backstage without permission of the Duty Technician. All guests must return to Front of House by the Half-hour Call unless specifically agreed.

Dressing room keys & Passes should be returned on your departure, any losses will be charged for.

Inevitably there will, from time to time, be accidents, which cause damage to RWCMD property. Please let us know as soon as possible if this occurs. We strongly advise that you inspect the dressing rooms and other areas you are occupying on arrival to ensure that you are not held responsible for damage caused by previous occupants.

Due to Welsh Assembly legislation the RWCMD operates a no smoking policy throughout the Site except in the designated smoking area towards the end of the building. (This includes Herbal or “e” cigarettes for use on stage during a performance. Please contact the Tech Ops dept. for more info)

Strictly no alcohol is allowed backstage.

No pets or animals other than guide dogs are permitted backstage. With the exception of animal performers which should be arranged in advance with the Technical Manager.

Bicycles or scooters etc. should not be brought into any of the RWCMD buildings. Bike racks are available to the rear of the building

All electrical appliances used in the theatre must be checked by a member of technical staff prior to use and have a valid PAT Certificate.

All dressing rooms and backstage areas should be vacated within 30 minutes of curtain down on an evening performance unless specifically agreed with the duty technician. This does not include Get-outs.

Technical requirements, including staffing, must be agreed with the Technical Manager at least 4 weeks in advance of the first performance.

The Fire Regulations, as laid down by the Licensing Authority, must be observed.

If the Fire Officer does not accept any part of the setting, or if any exits are in any way obstructed (e.g. by setting/storage/ movements of scenery) the duty House manager may delay or cancel the performance

Please read the fire instructions, which are located in each dressing room and on the corridors and in offices. The assembly point is between the main building and the Anthony Hopkins Centre

Hard hats must be worn on the main stage when notified
(IE at times when work is taking place in the grid)

No Company member or unauthorised member of staff is to access the fly floor, grids or Gantries without express permission of the duty technician.

All production risk assessments should be sent in and agreed in advance and an up to date copy made available to the duty technician upon arrival of the company.

Basic Dimensions

Stage Width	13.00m
Stage Depth to Pros	10.07m
Stage Depth to Front Edge 1	2.58m
Height - Floor to Grid	11.72m
Height - Floor to under Fly Floor	6.16m
Proscenium Arch	8.40m Wide x 5.10m High

The Height of the pros is adjustable using the winched house header.

Floor

Flat floor 22mm Ply over battened Concrete with sacrificial 10mm MDF covering

Minor fixings and painting are permitted at the discretion of the duty technician. The stage must be returned to a useable condition and painted back to black as part of your get-out unless agreed otherwise. Charges may apply.

We insist on using "Flints Theatre Black" paint for the stage floor, this can be provided at cost.

Get-In Access, Loading & Parking

Street level access through scene dock directly on to stage.

Scene Dock 9.10m Wide x 15.82m Long x 6.26m High

Doors - Outside to Scene Dock 2.89m Wide x 3.13m High

Doors - Scene Dock to Stage 2.95m Wide x 5.00m High

It is not possible to leave vehicles at the loading bay.

Vans must be removed once loading is completed. Parking for production vehicles may be arranged in advance but CANNOT be guaranteed.

The Royal Welsh College of Music & Drama does not provide parking for any personal cars other than in extraordinary circumstances. There are several disabled bays located around the campus.

The scenery dock is not for the sole use of the Richard Burton Theatre. If you specifically require space in the dock other than access through to stage, please arrange this with us in advance.

Flying & Rigging

28 bars of single purchase counterweight flying (Max 300kgs per bar)
Fly Bar Length 8.50m + 0.5m trombone extension each end (note: width between fly floors approx. 9.2m @ 6.16m high)

Please note that the flying out of full cloths/set items can only be achieved by using the black pros header DS which is provided on a Winched Bar Immediately behind Pros with permanent hard header. (Black Serge covered)

1 x Motorised Truss above Apron. 1000kg UDL SWL.
4 x Bars above Tension Wire Grid FOH. 100kg UDL SWL each
Front of Upper Circle Bar SWL 250kg UDL
Front of Circle Bar SWL 250kg UDL
Movable side Ladders each side of apron, SWL 250KG UDL
For More info on Rigging and flying please contact us

Access Equipment (Dependant on availability)

1 x Genie GR-20 Runabout (Terms of use apply)
1 x AAE Tallescope Model 50518**
1 x Zarges 12 Rung Skymaster
1 x Zarges 10 Rung Skymaster
1 x Zarges 8 Rung Skymaster
Selection of A Frame Stepladders

Various other access equipment may be available depending on usage of general stock.

**Please note that it is our in-house policy not to move the tallescope whilst the basket is occupied unless at least one member of the team undertaking the use has been formally trained to do so and an individual risk assessment has been put in place for the specific activity. Please contact the Tech Ops dept. to discuss any issues you may have. Please be aware unless all of our policies are adhered to, RWCMD staff will refuse move the tallescope.

Power

The vast majority of Hard-Power supplies in the Venue are on Ceeform connectors. The largest single supply usable by visiting companies is 125A/3ph. The layout of power supplies is detailed below:

USR: (Usually used as Sound Power for larger productions)

63A1ph
2 x 32A1ph
2 x 16A1ph

USL:

125A3ph
2 x 63A3ph
63A1ph
2 x 32A1ph

Dock (SL):

63A3ph
2 x 32A3ph
63A1ph
2 x 32A/1ph
4 x 16A1ph

Fly Floor:

4 x 32A3ph supplies (NOT RCD Protected)

We hold in stock a variety of 1ph and 3ph Mains Distribution and cabling, please contact us for more info.

In Addition to this there are several 13a tech power supplies through the space.

Sound power is supplied on powercon connections around the venue

Lighting

Working Light & Houselights:

Unison System with Control panels around space, option of DMX/SACN control CFL/LED workers throughout the venue and Dimmable GDS LED Houselights. Please Note: All "BlueDome" workers are controlled via the Unison System or DMX, the overhead blues in the wings and crossover are switched independently from USL

Dimming & Control:

ETC Sensor Dimmers (176 x 3kw, 12 x 5kw. Not all dimmers are populated)
ETC Sensor Non-Dims (36 x 3kw Not all dimmers are populated)
Please note that most "general use" dimmers are populated; there are just a few in more obscure places that are not populated such as OS Grid & Dock.

All Dimmers are hardwired to Facility panels throughout the venue with the following terminations:

3kw Dimmers - 15A or Socapex
5kw Dimmers - 32A Ceeform and 2 x 15A
3kw Non Dims - 16A Ceeform (occasionally socapex)

The Burton does not have a specific allocated Lighting desk. All Desks are kept in a central stock and allocated as necessary. Desks include: ETC Ion/Gio/Nomad, Grand MA2, Avolites Tiger Touch II, Zero88 FLX.

The venue has a fully patchable DMX & Data infrastructure dedicated to lighting, which is all centrally patchable via the Dimmer room.

DMX Terminates in 5pin XLR

Data Terminates in Ethercon

Fibre-optic terminates in Opti-con

Please note: Our House dimmers etc. use almost an entire universe of DMX

Standard Lantern Stock:

24 x ABD F101 1.2kw Fresnels
8 x ADB F201 2kw Fresnels
24 x ETC Source 4 Par (VNS, NS, MF, WF lenses available) {750w}
12 x ETC Source 4 Zoom 15/30 Profile {750w}
12 x ETC Source 4 Zoom 25/50 Profile {750w}
12 x ETC Source 4 Zoom 26 Degree Profile {750w}
6 x Selecon LUI 4 cell cyc Battens {4 x 1kw}

This stock can vary due to maintenance & scheduling. Please contact us to confirm availability

16 x 6way 3m IWB with double ended hook clamps
Wide selection of TRS, Socapex and breakouts

All overhead bars are cabled using socapex and 3m 6way IWBs or fanouts, usually from the SR fly floor

Please see the standard FOH rig at the end of this document.

DMX House Patch

Dimmers: 1 - 176
Non-Dims: 301 - 332
5kw Dimmers: 501 - 509
Houselights: 441 - 480, 426 & 427
FOH Voms: 485, 487, 488
Step Lights: 428 - 430
Blues: 432 - 436
Workers: 406 - 413, 484, 486, 490, 492 - 496

It is NOT possible to change these addresses. It is advised that all additional equipment be used on separate universes

NB: Housed within the Central DMX patch is an ETC NET3 gateway.

Sound

The Venue has a comprehensive centrally patched infrastructure for sound, comprising of:

XLR tie lines, Speakon Tie lines & Ethercon Tie lines.

Standard PA

2 x EM122W Full Range Speaker for stalls (EM DQ10 Amp)
2 x EM122W Full Range Speaker for circle (Yamaha XP7000 amp)
2 x EM 118 Sub Bass Speaker (EM DQ10 amp)
2 x EM81 8" monitors (Yamaha XP2500 amp) (usually hung on back of pros)
4 x EM61 6" FX Speaker/Monitors (Yamaha XM4180 4 channel amp)

Also housed within the Patch bay is a Roland S-1608 Digi-snake

The venue does not have a permanent specified Sound desk as they are allocated on a show by show bases. Manufacturers include: Yamaha, Roland, Soundcraft, Midas, Allen & Heath & Behringer.

We have a wide variety of microphones, DIs, outboard and sources including Q-lab systems. Please call to discuss your requirements

The Sound control room is situated at rear of stalls, with obscured view and hearing. For amplified events, it is advisable to use a stalls control position. This must be arranged in advance with a varied loss of seats up to 13 lost. Standard Desk made up of Metrodeck units up to an absolute maximum of 2m wide 1m deep unless additional seats are taken off sale.

Additional Equipment:

The RWCMD houses a significant central stock of equipment in addition to the RBT standard Stock.

This includes:

- Martin, Varilite & Robe Intelligent fixtures
- Robe, ETC, Showtec & Chauvet LED Fixtures
- Look Solutions & Lemaitre smoke/haze machines
- Trantec & Shure Radio Microphone sets
- D&B and EM monitor systems
- Axys, EM & Martin Audio speaker systems
- Panasonic 4k, 6k and 10k projectors
- Black Magic, Roland & Kramer Video switchers and vision mixers
- Sony Broadcast standard cameras
- Mac Q-lab systems
- Lodestar D8+ Motors and 1t Manual Chain Blocks
- Prolyte & Astralite truss
- LeMaitre Pyrotechnic equipment

All of this equipment is subject to availability and additional cost may be incurred.

Stage Management

1 x GDS DSM Desk consisting of: 12way Cue lights, Show ready and Calls to FOH & ROH, Clock and timer, 2 x colour TV, Programmable Cue light module.
8 x GDS Cue Light outstations

SM desk can be located at: DSR, DSL, Prod Desk in stalls or Stalls Control Room

A dual ring (on 5pin XLR) Canford Tecpro comms system is installed throughout the venue.

There is a fully Patchable Video infrastructure throughout the theatre, terminating in BNC.

A show relay camera is situated on the Front of Circle Rail, and is fed through a VDA and patchable to most areas of the venue including FOH screens and DSM desk.

It is possible to make calls from both control rooms aswell as the sm desk. With prior notice it is possible to move calls points to almost anywhere in the venue.

Drapes & Masking:

Standard stock of:

6 x Border 9m Width 2.5m Drop

8 x Leg 2m Width 6m Drop

2 x Tabs 9m Width 6m Drop

2 x ½ Tabs 5m Width 6m Drop

All Black Wool Serge with ties at the top and chain weighted

1 x White Sharkstooth Gauze 8.5m Width 6m Drop

1 x Black Sharkstooth Gauze 8.5m Width 6m Drop

1 x Cyc (Twin White PVC) 8.5m Width 6m Drop

1 x Black Cyc PVC (Rear/Front projection) 10m Width 6m Drop

All with Ties at the top and pocket at the bottom

There are Up/down tabs permanently rigged on tab tracks running on the on stage edge of the fly floors.

Selection of 6m x 1.2m black serge masking flats as well as varied stock of other sizes

Additional masking/drapes may be available dependant on usage of other spaces.

Staging

The Richard Burton Theatre does not have a dedicated stock of staging, however a small stock of 2m x 1m Metro-deck and 8ft x 4ft Lite-deck is kept on site and needs to be booked in advance. A Significant portion of our staging is stored off site at our scenic workshops. This may incur an additional charge.

Run off treads:

As standard the theatre does not have run-offs to the stalls. It is possible to install these with prior notice as seats need to be removed in the front row. (3 per side)

It is possible to remove the entire front row if necessary. Additional charges may apply as this is a time consuming process.

Please let us know as soon as possible before your tickets go on sale if seat removal is required.

Production Desk

It is possible to create a production desk in the centre stalls area. This is achieved using metrodeck staging sections and custom legs. There are facility panel traps to accommodate Audio, lighting, video & Stage management systems.

Follow spots

The venue is equipped with 2 x Robert Juliat Buxie Followspots as standard. These are located in the Upper Circle of the auditorium. There are 2 x 32A1ph supplies available for additional Followspots. Please book these in advance and let us know if you require operators.

Dressing rooms

2 x Good size dressing rooms are provided as standard. Both with lit mirrors and costume rails. Both can seat up to 5 at mirrors but are fairly large rooms which can accommodate more people, up to approx. 15 each. Toilet facilities and showers are adjacent to the dressing rooms but are not for the sole use of the venue.

The dressing rooms are on the 1st floor of the building accessed via stairs from the loading dock behind the stage. Lift access is available.

If necessary, it may be possible to use up to 2 additional rehearsal studios which are on the floor above the dressing rooms as additional backstage space. This is subject to availability and additional charges.

Alternatively, it may be possible to build quick change areas in the loading dock dependant on availability/space.

Please note that dressing room keys/codes are available from Reception. Keys not returned will be charged for.

Wardrobe

Wardrobe and laundry facilities must be arranged in advance as they are shared with the in-house costume department. Please note that there is no provision for touring equipment.

Irons, Ironing boards and additional costume rails can be made available upon request.

Refreshments

There are no catering facilities backstage. However, the FOH Café bar and the College refectory are open throughout the day serving a good selection of hot and cold meals as well as drinks and snacks.

Alternatively, Cardiff City Centre is only a 5-10min walk from the RWCMD where you will find all of your standard City centre eateries and restaurants.

Piano Tuning/Instrument Hire

As standard the Richard Burton theatre is not equipped with any instruments. Please contact the Technical Operations Department to discuss your requirements.

Tuning is available at cost.

Photocopying

This can be arranged by the Duty Technician or House Manager, and will be charged for.

Telephone & Internet Access

The RWCMD public Wi-Fi (The Cloud) is available throughout the theatre and backstage areas. Please contact us to discuss any additional requirements

Charges & Consumables

We have a limited stock of Colour (LEE & ROSCO) on site, use of which will be charged to the company at £5.00 per sheet

Gaffer Tape will be charged at £6.50 per roll

PVC Tape will be charged at £1.50 per roll

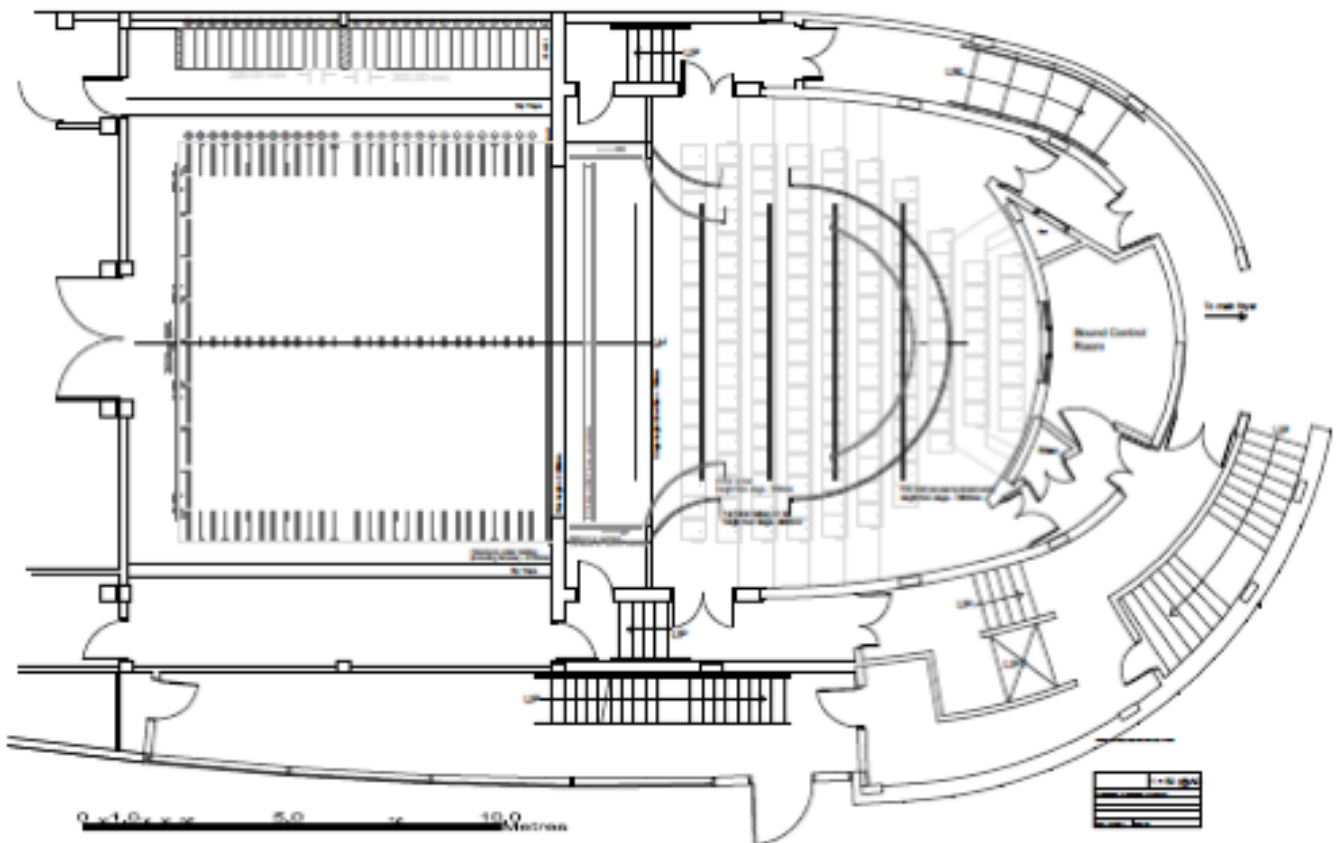
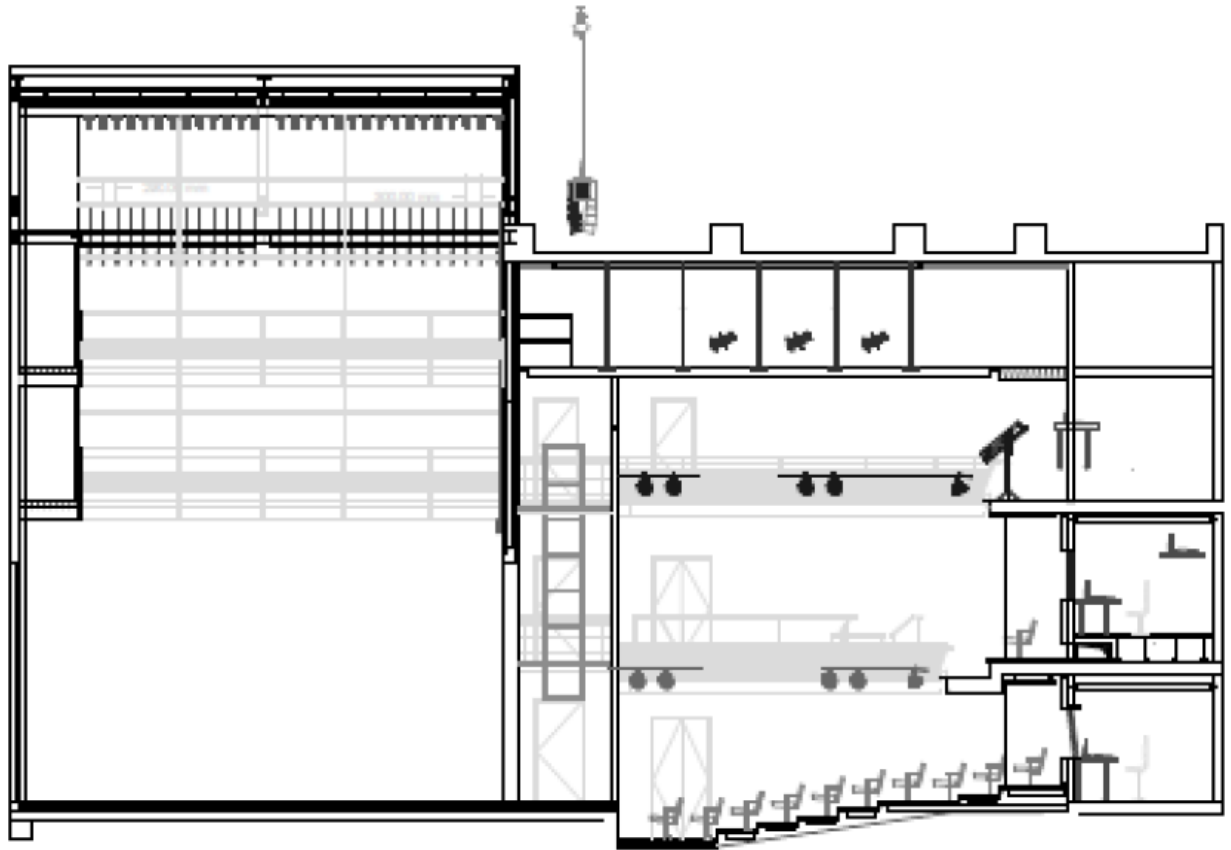
All other equipment charges to be discussed with the Technical Operations Manager.

FOH Merchandising & Programmes

Please contact the FOH team to discuss your requirements. Charges may apply.

Venue Plans

Full CAD plans of the theatre are available upon request.



Richard Burton Theatre Hanging Plot

Production -
Date -

Bar	Distance from Pros (US edge)	Distance from Stage Lip	Notes	Load Weight (kg)
Stage Lip	-			
Adv Bar	445mm	1366mm		
Header	Directly Behind Pros.		Black Serge Hard Header on Winch (SWL 250kg)	
1	510mm	2930mm		
2	790mm	3210mm		
3	1080mm	3500mm		
4	1380mm	3800mm		
5	1690mm	4110mm		
6	2000mm	4420mm		
7	2320mm	4740mm		
8	2620mm	5040mm		
9	2920mm	5340mm		
10	3220mm	5640mm		
11	3520mm	5940mm		
12	3820mm	6240mm		
13	4110mm	6530mm		
14	4400mm	6820mm		
15	4700mm	7120mm		
16	5250mm	7670mm		
17	5550mm	7970mm		
18	5830mm	8250mm		
19	6050mm	8470mm		
20	6400mm	8820mm		
21	6710mm	9130mm		
22	7000mm	9420mm		
23	7300mm	9720mm		
24	7600mm	10,020mm		
25	7900mm	10,320mm		
26	8150mm	10,570mm		
27	8420mm	10,840mm		
28	8700mm	11,120mm		

All Counterweight sets SWL 300kg UDL
Depth of Pros: 300mm