

# Dora Stoutzker Hall

---

## Technical Specifications

Last Updated April 2020



## Venue Contacts:

### Venues Manager

Janet Smith

02920 391376

Janet.Smith@rwcmd.ac.uk

### Technical Operations Manager

Leigh Kirk-Harris

02920 391383

Leigh.Kirk-Harris@rwcmd.ac.uk

### Technical Operations Department

02920 391383

Tech@rwcmd.ac.uk

### FOH Manager

Tracey Bishop

02920 391311

Tracey.bishop@rwcmd.ac.uk

### Box Office

02920 391391

Boxoffice@rwcmd.ac.uk

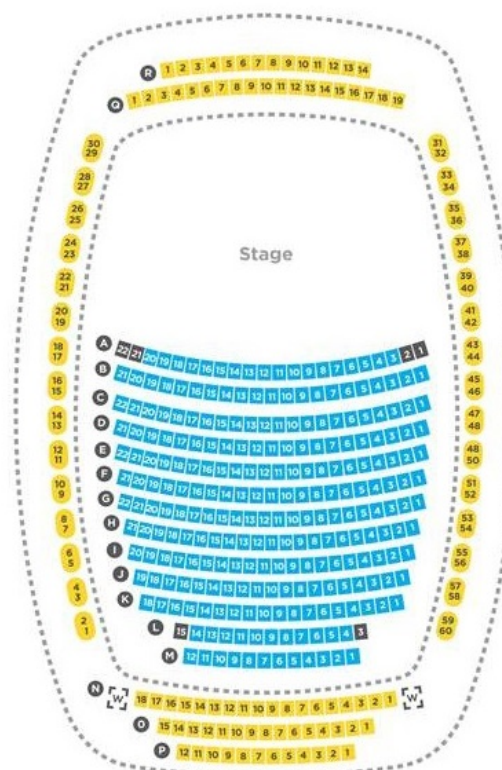
### Main Switchboard

02920 392854

## Introduction to the space:

Opened in June 2011, The Dora Stoutzker Hall is Part of the Royal Welsh Colleges new £22.5 Million Suite of Facilities. It is Wales' first Purpose Built Chamber Concert Hall and can hold up to 400 patrons.

## Seating Plan:



## RWCMD House Rules

**Our aim is for you and your company to have an enjoyable and successful visit. To ensure this, we would appreciate you following the guidelines below:**

The following provides the framework within which RWCMD operates, to ensure the safety and well-being of all in the building:

All employees, visitors and contractors must at all times take reasonable care for the health and safety of themselves and others. They must co-operate fully with RWCMD in order to ensure safe working practices and compliance with statutory licensing and Health & Safety requirements.

For clarity, “backstage” refers to all areas of the theatre not open to the public.

Whilst every effort is made to maintain security, the Royal Welsh College of Music & Drama accepts no liability for the loss or theft of personal belongings left on site.

Visiting Companies/artists are advised to keep their dressing rooms locked at all times.

Security of your personal property is your own responsibility. Visiting company members are advised to keep their dressing rooms locked when unoccupied. Guests are not permitted backstage without permission of the Duty Technician. All guests must return to Front of House by the Half-hour Call unless specifically agreed.

Dressing room keys & Passes should be returned on your departure, any losses will be charged for.

Inevitably there will, from time to time, be accidents, which cause damage to RWCMD property. Please let us know as soon as possible if this occurs. We strongly advise that you inspect the dressing rooms and other areas you are occupying on arrival to ensure that you are not held responsible for damage caused by previous occupants.

Due to Welsh Assembly legislation the RWCMD operates a no smoking policy throughout the Site except in the designated smoking area towards the end of the building. (This includes Herbal or “e” cigarettes for use on stage during a performance. Please contact the Tech Ops dept. for more info)

Strictly no alcohol is allowed backstage.

No pets or animals other than guide dogs are permitted backstage. With the exception of animal performers which should be arranged in advance with the Technical Manager.

Bicycles or scooters etc. should not be brought into any of the RWCMD buildings.  
Bike racks are available to the rear of the building

All electrical appliances used in the theatre must be checked by a member of technical staff prior to use and have a valid PAT Certificate.

All dressing rooms and backstage areas should be vacated within 30 minutes of curtain down on an evening performance unless specifically agreed with the duty technician. This does not include Get-outs.

Technical requirements, including staffing, must be agreed with the Technical Manager at least 4 weeks in advance of the first performance.

The Fire Regulations, as laid down by the Licensing Authority, must be observed. If the Fire Officer does not accept any part of the setting, or if any exits are in any way obstructed (e.g. by setting/storage/ movements of scenery) the duty House manager may delay or cancel the performance

Please read the fire instructions, which are located in each dressing room and on the corridors and in offices. The assembly point is between the main building and the Anthony Hopkins Centre

Hard hats must be worn on the stage when notified

No Company member or unauthorised member of staff is to access the fly floor, grids or Gantries without express permission of the duty technician.

All production risk assessments should be sent in and agreed in advance and an up to date copy made available to the duty technician upon arrival of the company.

## Basic Dimensions

Distance from forestage to rear stalls	12.5m	
Distance from forestage to lighting bridge FOH	13.5m	
Scene Dock	4.55m Width x 8.89m Length	
Doors - Outside to Scene Dock	2.83m Width x 2.07m Height	
Doors - Scene Dock to Stage	2.06m Width x 2.04m Height	
Downstage Stage Width (Without Extension)	14.1m	
Downstage Stage Width (Extension)	11.8m	
Stage Depth (Without Extension)		9.1m
Stage Depth (With Extension)	11.3m	
Upstage Stage Width	11.0m	
Max Height - Floor to Truss	11.0m	
Height - Floor to Roof	12.7m	
Stage Height (with forestage lift at stalls level with seating)		0.52m
Riser 1 (Max Height)	0.27m	
Riser 1 (Centre Depth)	1.46m	
Riser 2 (Max Height)	0.55m	
Riser 2 (Centre Depth)	1.50m	
Riser 3 (Max Height)	0.83m	
Riser 3 (Centre Depth)	1.66m	

Floor is Varnished Birch over metal frame. Three Upstage Risers on moveable lifts. **Screwing into the floor is NOT PERMITTED** under any circumstance. We reserve the right to prevent use of "budget" gaffer tapes etc. which may damage the floor/wall panelling in the venue.

## Get-In Access, Loading & Parking

Street level access (via vehicle ramp) through scene dock directly on to stage.

Scene Dock	4.55m Width x 8.89m Length
Doors - Outside to Scene Dock	2.83m Width x 2.07m Height
Doors - Scene Dock to Stage	2.06m Width x 2.04m Height

There is minimal space to leave vans on the loading ramp, please discuss your requirements with us in advance. Additional parking for production vehicles may be arranged in advance but CANNOT be guaranteed.

The Royal Welsh College of Music & Drama does not provide parking for any personal cars other than in extraordinary circumstances. There are several disabled bays located around the campus.

NB The loading dock also houses the halls music stand and chair stock.

## **Flying & Rigging**

4 x Power Flown Ladder Bars using Stage Technologies Nomad System.  
500kg UDL SWL each. 10m long (+ Trombone extensions)  
1 x Fixed FOH Bridge Position (above glass roof panels)  
4 x Fixed Overhead Bridge Positions (above glass roof panels)  
1 x Front of Circle rail  
2 x Side Rails (Mounted along the side balconies)  
2 x Ladder Perch Positions (1 each side of DS edge)  
1 x Ladder bar suspended below the auditorium ceiling directly underneath the FOH lx position (flown using 4 x CM Prostar 250kg hoists) Overall Bar SWL of 500kg UDL

## **Access Equipment (Dependant on availability)**

1 x Zarges 10 Rung Skymaster  
1 x Zarges 6 Rung Skymaster  
Selection of A Frame Stepladders

Various other access equipment may be available depending on usage of general stock including tallescopes.

\*\*Please note that it is our in-house policy not to move the tallescopes whilst the basket is occupied unless at least one member of the team undertaking the use has been formally trained to do so and an individual risk assessment has been put in place for the specific activity. Please contact the Tech Ops dept. to discuss any issues you may have. Please be aware unless all of our policies are adhered to, RWCMD staff will refuse move the tallescope.

## Power

The vast majority of Hard-Power supplies in the Venue are on Ceeform connectors. The largest single supply usable by visiting companies is 63A/3ph. The layout of power supplies is detailed below:

### **Dock/OB Power:** (approx. 25m run to DSL)

1 x 63A/3ph

1 x 63A/3ph NO RCD

2 x 32A/3ph

1 x 32A/1ph

4 x 16A/1ph

### **Roof Space:**

2 x 32A3ph (20m cable run to most useful positions) NO RCD

1 of these is used for the FOH motors

1 x 32A1ph

In Addition to this there are several 13a tech power supplies through the space.

Sound power is supplied on powercon connections around the venue

## Lighting

NB: As standard the DSCH is only equipped with a full open white concert wash, with up to 6 specials from FOH. Colour washes etc. have to be rigged per production

### Working Light & Houselights:

Unison System with Control panels around space, option of DMX control CFL workers throughout the venue and Dimmable Houselights.

Please Note: All Blue workers are controlled via the Unison System on DMX Cold Cathode tubes to light the alcoves around the venue (dmx optional)

### Dimming & Control:

1 x Zero88 FLX with an additional fader wing running via KVM to prompt corner  
ETC Sensor Dimmers (120 x 3kw, 12 x 5kw, not all dimmers are populated)  
ETC Sensor Non-Dims (36 x 3kw, not all dimmers are populated)

Please note that most "general use" dimmers are populated; there are just a few in more obscure places that are not populated with modules.

All Dimmers are hardwired to Facility panels throughout the venue with the following terminations:

3kw Dimmers - 15A or Socapex

5kw Dimmers - 32A Ceeform and 2 x 15A

3kw Non Dims - 16A Ceeform (occasionally socapex)

\*In addition to the house desk, other centrally stocked desks include: ETC Ion/Gio/Nomad, Grand MA2, Avolites Tiger Touch 2, Zero88 FLX.

The venue has a fully patchable DMX & Data infrastructure dedicated to lighting, which is all centrally patchable via the Dimmer room.

DMX Terminates in 5pin XLR

Data Terminates in Ethercon

Fibre-optic terminates in Opti-con

### Standard Lantern Stock:

FOH Bridge - 6 x Source4 10deg, 8 x Source4 19deg

Side Perches - 4 x Source4 26deg per side

2 x Strand Quartzcolour 1k Fresnel per side

Overhead - 38 x Source4 Pars (Narrow lens - "CP61")

Please see the standard FOH rig at the end of this document.

Various other lanterns may be available, please contact us to discuss your requirements.



## DMX House Patch

Dimmers: 1 - 115  
Non-Dims: 301 - 334  
5kw Dimmers: 501 - 512  
Houselights: 916 - 918, 924, 926 - 928 (universe 2)

It is NOT possible to change these addresses.

Universes 1 & 2 are not available for production use as they are taken up by the venues Unison Lighting control system which includes working light, architectural lighting & Houselights etc.

NB: Housed within the Central DMX patch is an ETC NET3 gateway.

## Sound

D&B System fed and distributed by Sound Web Matrix  
Controlled and monitored by PC in control room via R70 interface

FOH: 7 x D6 Amplifiers

Left and Right Clusters consisting of

1 x Q7 and 1 x Q10 per hang

1 x E6 (Side Fill) per hang

1 x E8 (Rear Fill) per hang

Stage Stacks consisting of

1 x B4 Sub per side

1 x E12 Mid Top Box per side (often hung from side rails)

Stage Front Fills consisting of

5 x E6 (L&R feed)

Stage Monitors: 2 x Loose D6 Amplifiers

4 x MAX 12 monitor wedges

Also housed within the Patch bay is a Roland S-1608 Digi-snake

The venue does not have a permanent specified Sound desk as they are allocated on show by show bases. Manufacturers include: DigiCo, Yamaha, Roland, Soundcraft, Midas, Mackie, Allen & Heath & Behringer.

We have a wide variety of microphones, DIs, outboard and sources including Q-lab systems. Please call to discuss your requirements

The Sound control room is situated at rear of stalls, with obscured view and hearing. For amplified events, it is advisable to use a stalls control position. This must be arranged in advance as it requires loss of seats.

## Acoustics

Surrounding the venue are roll up acoustic banners that are remote controlled and have various different pre-sets dependant on the acoustic required. The US portions of the “Alcoves” are movable which can also altar the acoustic.

## Audio Visual

Panasonic 10K Laser Projector ceiling mounted in the control room  
Roll Up screen hung on Fly Bar 4  
Dedicated AV PC in control room  
KVM running to stage to allow local presenter control  
DVI over Fibre kit to run comfort monitor as required  
2 x SDI Point to Point tie lines from each side of stage to control room patch  
2 x Cat6e Point to Point tie lines from each side of stage to control room patch

## Additional Equipment:

The RWCMD houses a significant central stock of equipment in addition to the DSH standard Stock.

This includes:

- Martin, Varilite & Robe Intelligent fixtures
- Robe, ETC, Showtec & Chauvet LED Fixtures
- Look Solutions & Lemaitre smoke/haze machines
- Trantec & Shure Radio Microphone sets
- D&B and EM monitor systems
- Axyis, EM & Martin Audio speaker systems
- Panasonic 4k, 6k and 10k projectors
- Black Magic, Roland & Kramer Video switchers and vision mixers
- Sony Broadcast standard cameras
- Mac Q-lab systems
- Lodestar D8+ Motors and 1t Manual Chain Blocks
- Prolite & Astrstralite truss
- LeMaitre Pyrotechnic equipment

All of this equipment is subject to availability and additional cost may be incurred.

## Stage Management

1 x GDS DSM Desk consisting of: 8way Cue lights, Show relay and Calls to FOH & ROH, Clock and timer.

4 x GDS Cue Light outstations

A dual ring (on 5pin XLR) Canford Tecpro comms system is installed throughout the venue.

There is a fully Patchable Video infrastructure throughout the theatre, terminating in BNC.

A show relay camera is situated on the Front of Circle Rail, and is fed through a VDA and patchable to most areas of the venue including FOH screens and DSM desk.

It is possible to do calls from the control room aswell as the sm desk. With prior notice it is possible to move calls points to almost anywhere in the venue.

## Drapes & Masking:

As an open concert hall, the Dora does not have any theatrical drapes in stock as standard. However, stock may be available from other venues within the RWCMD. This should be booked in advance and may incur a charge.

## Staging

The vast majority of staging requirements are provided by the mechanical lifts built into the stage. However, to facilitate more specific requests, a large stock of portable rostra in 75cm sections is available on request at a variety of heights. Other staging includes Steeldeck, Litedeck and Metrodeck which may incur a charge

Run off treads are incorporated into the stage structure DSR & DSL

**Stage Extension\*\*:** It is possible to remove rows A & B and raise the forestage lift up to create a stage extension. Please call to discuss this in advance of your tickets going on sale.

## Removable seats/Orchestra Pit

There are several sections of the auditorium seating that is removable to accommodate camera positions, production/judges desks etc. These are the only seats that can be removed.

These are:

3 seats at either end of rows F & G

Rows L&M Completely

2 at each end of A&B (wheelchair positions)

1 seat in circle row A to accommodate cable trap to control room

\*\*Rows A&B are housed on Movable wagons mounted on a lift. Once seating is removed it is possible to raise the lift to stage height or down to pit level.

Please contact us to discuss your "PIT" requirements

## Follow spots

There is no "easy" provision for Follow spots at present. Please call to discuss your requirements

## Orchestral Equipment

60 x Manhasset Adjustable Music Stands (Double Lip)

2 x Manhasset Adjustable Conductors Music Stand (Double Lip)

60 x Black Cat Orchestral Chairs (47cms Seat Height)

30 x Black Cat Orchestral Chairs (43cms Seat Height)

8 x Adjustable Height Double Base/Perc Stools

1 x Conductors Podium with rail

1 x Conductors Chair

Up to 60 Clip on K&M music stand lights can be available upon request.

## Instruments

1 x Steinway and Son Model B Grand Piano

1 x Steinway and Son Model D Concert Grand (available upon special request)

Concert Piano stock tuned to 441Hz

Various Other instruments are stored within the Hall including a Digital Organ, a Celeste and a Harpsichord. Please arrange this in advance and charges may apply. Details provided upon request.

Tuning is available at cost.

Instrument storage racks for orchestras are housed in the crossover corridor

## Dressing rooms

### 4 Dressing rooms

**2 x Soloist/conductor:** (Capacity: 1-2 comfy 3-4 cosy)

Both of which are en-suite (1 x wet room/disable access) DR1 is equipped with a Steinway and sons upright. Both have lit mirrors, sofas and clothes rails. Both are at 1<sup>st</sup> floor level accessed from the backstage staircase (USL) or via lift through FOH

**2 x Ensemble/Chorus:** (Carne room & Foyle Room) (Max capacity 30 each)

Both have lit Mirrors and costume rails. Foyle room is at 1<sup>st</sup> floor, Carne is at 2<sup>nd</sup>. Both accessible by stairs or Lift SR

If necessary, it may be possible to book some of our rehearsal studios as additional dressing rooms. This is subject to availability and additional charges. NB access is through FOH

Please note that dressing room keys are available from Reception. Keys not returned will be charged for.

## Wardrobe

Wardrobe and laundry facilities must be arranged in advance as they are shared with the in-house costume department. Please note that there is no provision for touring equipment.

Irons, Ironing boards and additional costume rails can be made available upon request.

## Refreshments

There are no catering facilities backstage. However, the FOH Café bar and the College refectory are open throughout the day serving a good selection of hot and cold meals as well as drinks and snacks.

Alternatively, Cardiff City Centre is only a 5-10min walk from RWCMD where you will find all of your standard City centre eateries and restaurants.

## Photocopying

This can be arranged by the Duty Technician or Duty House Manager, and will be charged for.

## **Telephone & Internet Access**

The RWCMD public Wi-Fi (The Cloud) is available throughout the theatre and backstage areas. Please contact us to discuss any additional requirements

## **Charges & Consumables**

We have a limited stock of Colour (LEE & ROSCO) on site, use of which will be charged to the company at £5.00 per sheet

Gaffer Tape will be charged at £6.50 per roll

PVC Tape will be charged at £1.50 per roll

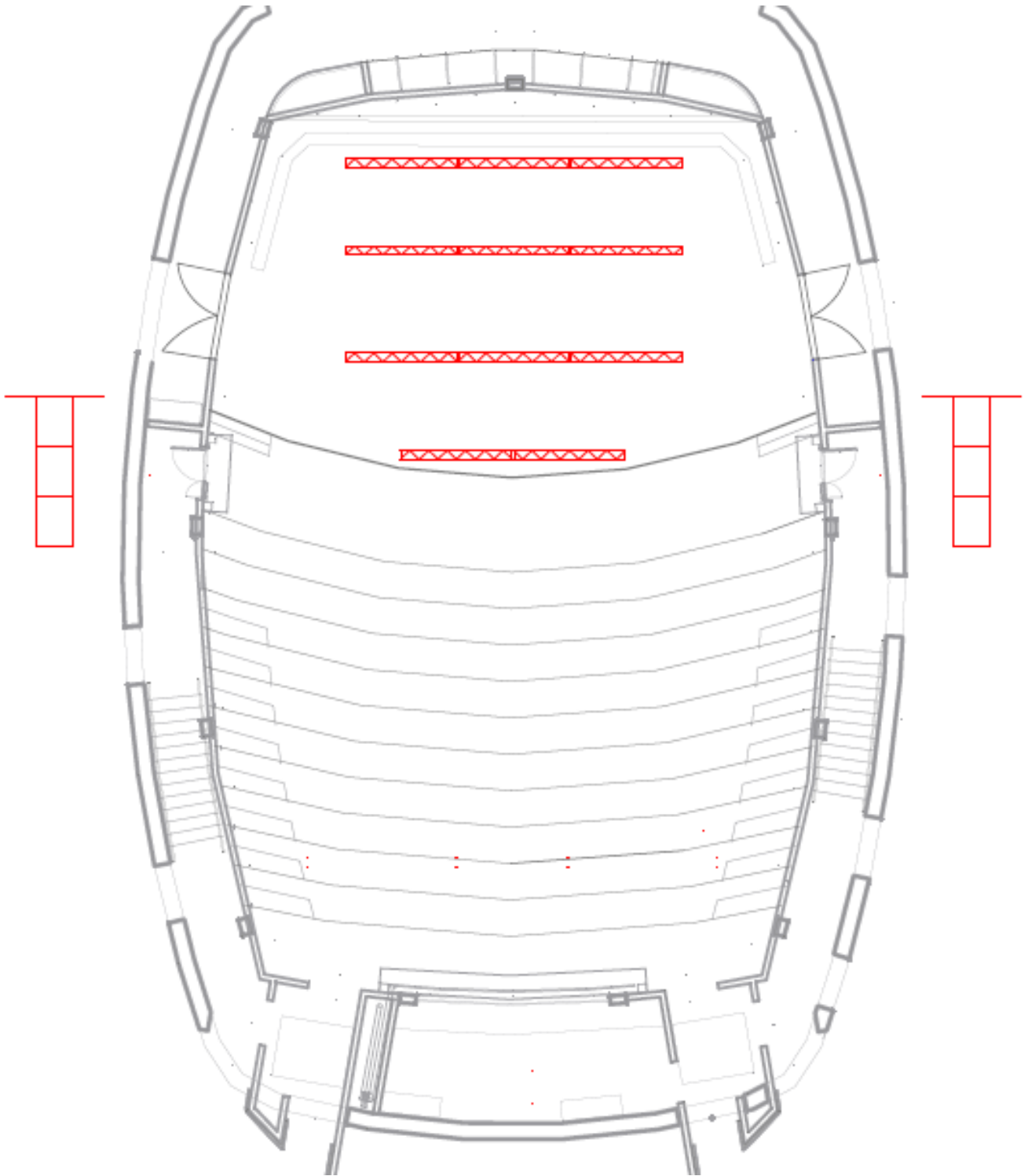
All other equipment charges to be discussed with the Technical Operations Manager.

## **FOH Merchandising & Programmes**

Please contact the FOH team to discuss your requirements. Charges may apply.

## Venue Plans

Full CAD plans of the theatre are available upon request.

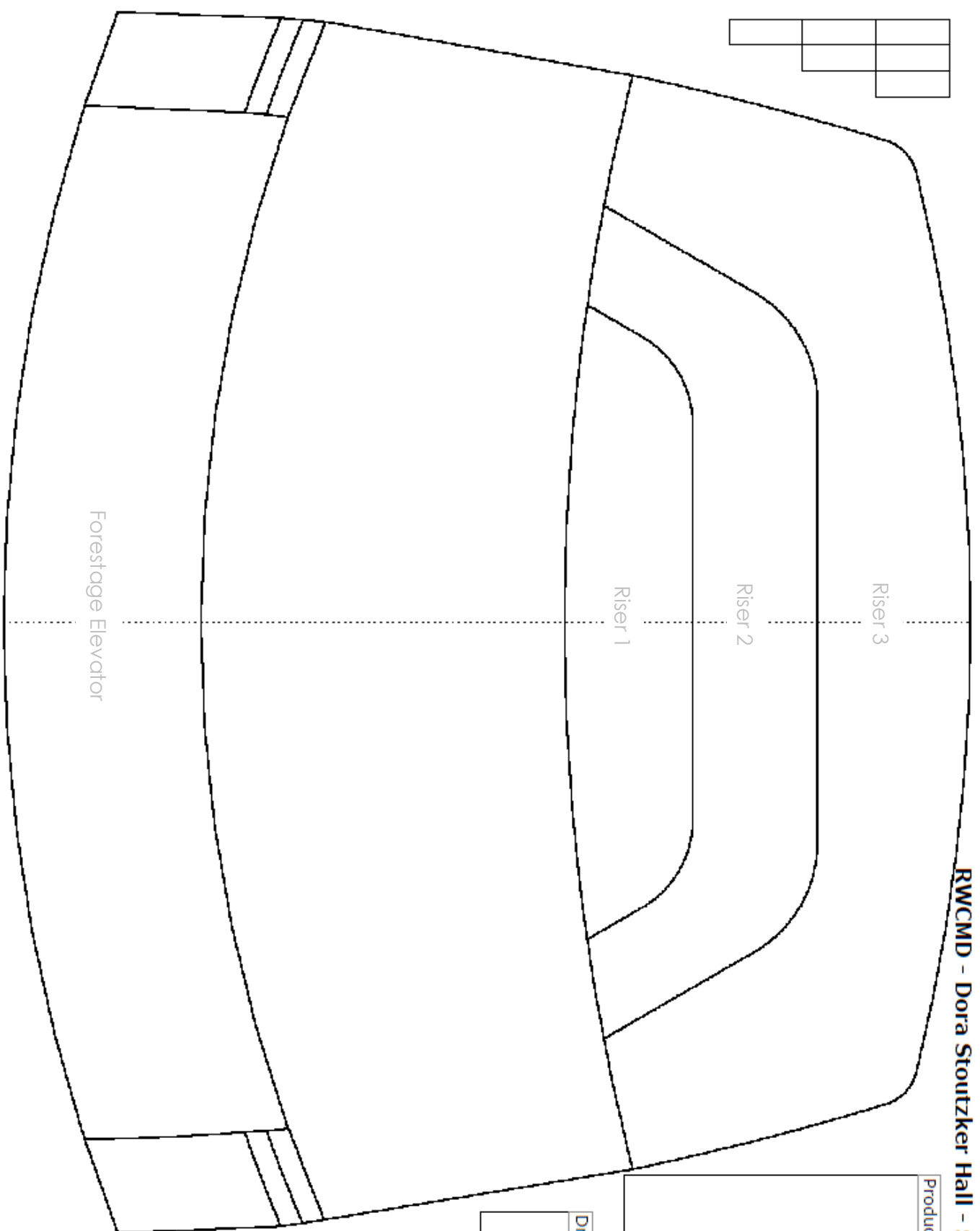
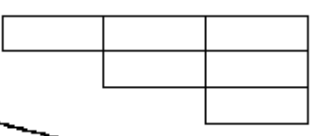


**RWCMD - Dora Stoutzker Hall - Stage Layout**

Production/Rehearsal

Drawn By:

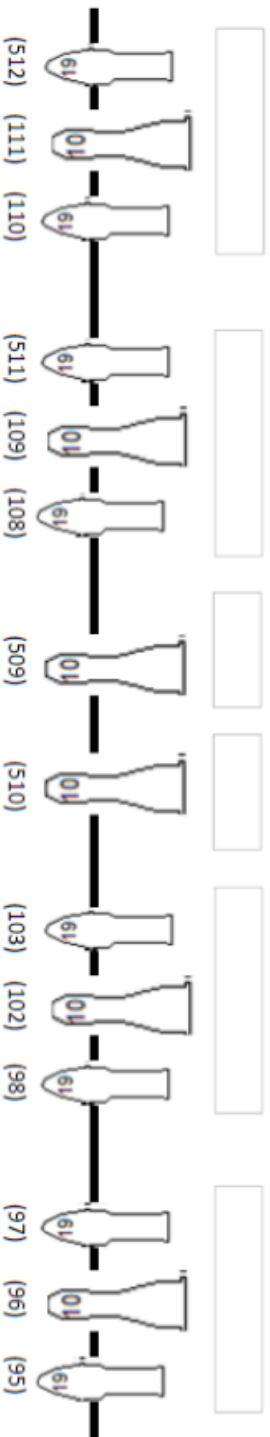
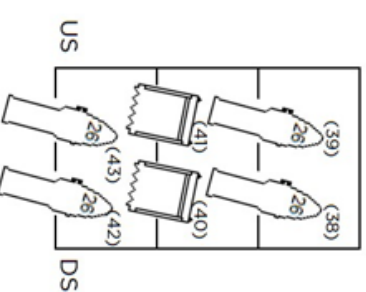
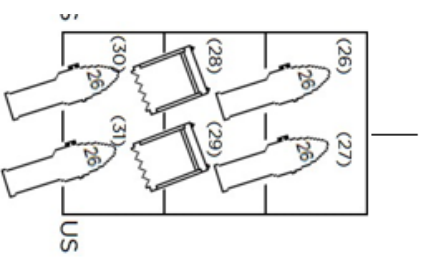
Key:





## Standard Concert Wash Channel layout

	80	81	82	83	88	89	90	91	
	68	69	70	71	72	73	76	77	78
	56	57	58	59	60	61	64	65	66
	44	45	46	47	48	49	52	53	54



US

MS

DS

EXT

US

DS