

Bute Theatre

Technical Specifications

Last Updated April 2020



Venue Contacts:

Venues Manager

Janet Smith 02920 391376 Janet.Smith@rwcmd.ac.uk

Technical Operations Manager

Leigh Kirk-Harris 02920 391383 Leigh.Kirk-Harris@rwcmd.ac.uk

Technical Operations Department

02920 391383 Tech@rwcmd.ac.uk

FOH Manager

Tracey Bishop 02920 391311 Tracey.bishop@rwcmd.ac.uk

Box Office

02920 391391 Boxoffice@rwcmd.ac.uk

Main Switchboard

02920 392854

Introduction to the space:

First opened in 1977 The Bute Theatre is a Flexible Studio Theatre, housed in the Raymond Edward Building of The RWCMD Campus. Originally built as a television studio, it now functions a highly versatile performance space.

Seating:

No fixed seating, Sold on as unreserved basis.

There is a tiered seating bank along one side of the space with the capability of accommodating approx. 100 chairs. Most productions do not use the seating bank and choose to “tab off” the area and use the open floor only, building seating positions within the space. The studio floor is at ground level.

Up to 160 folding linkable theatre seats available

RWCMD House Rules

Our aim is for you and your company to have an enjoyable and successful visit. To ensure this, we would appreciate you following the guidelines below:

The following provides the framework within which RWCMD operates, to ensure the safety and well-being of all in the building:

All employees, visitors and contractors must at all times take reasonable care for the health and safety of themselves and others. They must co-operate fully with RWCMD in order to ensure safe working practices and compliance with statutory licensing and Health & Safety requirements.

For clarity, “backstage” refers to all areas of the theatre not open to the public.

Whilst every effort is made to maintain security, the Royal Welsh College of Music & Drama accepts no liability for the loss or theft of personal belongings left on site.

Visiting Companies/artists are advised to keep their dressing rooms locked at all times.

Security of your own personal property is your own responsibility. Visiting company members are advised to keep their dressing rooms locked when unoccupied.

Guests are not permitted backstage without permission of the Duty Technician. All guests must return to Front of House by the Half-hour Call unless specifically agreed.

Dressing room keys & Passes should be returned on your departure, any losses will be charged for.

Inevitably there will, from time to time, be accidents, which cause damage to RWCMD property. Please let us know as soon as possible if this occurs. We strongly advise that you inspect the dressing rooms and other areas you are occupying on arrival to ensure that you are not held responsible for damage caused by previous occupants.

Due to Welsh Assembly legislation the RWCMD operates a no smoking policy throughout the Site except in the designated smoking area towards the end of the building. (This includes Herbal or “e” cigarettes for use on stage during a performance. Please contact the Tech Ops dept. for more info)

Strictly no alcohol is allowed backstage.

No pets or animals other than guide dogs are permitted backstage. With the exception of animal performers which should be arranged in advance with the Technical Manager.

Bicycles or scooters etc. should not be brought into any of the RWCMD buildings.
Bike racks are available to the rear of the building

All electrical appliances used in the theatre must be checked by a member of technical staff prior to use and have a valid PAT Certificate.

All dressing rooms and backstage areas should be vacated within 30 minutes of curtain down on an evening performance unless specifically agreed with the duty technician. This does not include Get-outs.

Technical requirements, including staffing, must be agreed with the Technical Manager at least 4 weeks in advance of the first performance.

The Fire Regulations, as laid down by the Licensing Authority, must be observed. If the Fire Officer does not accept any part of the setting, or if any exits are in any way obstructed (e.g. by setting/storage/ movements of scenery) the duty House manager may delay or cancel the performance

Please read the fire instructions, which are located in each dressing room and on the corridors and in offices. The assembly point is between the main building and the Anthony Hopkins Centre

Hard hats must be worn on the stage when notified

No Company member or unauthorised member of staff is to access the fly floor, grids or Gantries without express permission of the duty technician.

All production risk assessments should be sent in and agreed in advance and an up to date copy made available to the duty technician upon arrival of the company.

Basic Dimensions

Stage Width (No Wings)	14.0m
Stage Depth (No Extra Seating Block)	15.0m
Wing Space (Variable)	1.2m
Floor to Fixed Bars	6.0m
Floor to Roof	8.0m
Floor	No Rake slightly sprung plywood floor

Minor fixings and painting are permitted at the discretion of the duty technician. The stage must be returned to a useable condition and painted back to black as part of your get-out unless agreed otherwise. Charges may apply. We insist on using “Flints Theatre Black” paint for the stage floor, this can be provided at cost.

Get-In Access, Loading & Parking

Street level access through scene dock directly on to stage.

Doors - Outside to Scene Dock	3.3m Wide x 2.7m High
Doors - Scene Dock to Stage	1.5m Wide x 4m High

There is minimal space to leave vans on the loading bay, please discuss your requirements with us in advance. Additional parking for production vehicles may be arranged in advance but CANNOT be guaranteed.

The Royal Welsh College of Music & Drama does not provide parking for any personal cars other than in extraordinary circumstances. There are several disabled bays located around the campus.

NB The scene dock also functions as a paintshop. Access through is provided but storage of cases etc. is unlikely.

Flying & Rigging

7 x Flying Bars on straight hemp (Max 150Kgs per Bar)
7 x Fixed bar (Max 250kgs UDL) @ 6.0m from studio floor

“Up/Down” C beams provide additional rigging points. Maximum loads 250kg per bay. Please call to discuss your rigging requirements.

Truss/hoists/motors available upon request. Charges apply

Access Equipment (Dependant on availability)

There are Gantries running down the side walls at approx. 3m
Four bridges then cross the space between/above the gantries, with 6m clearance underneath. All gantry and bridge floors are mesh grill. (Lift access to gantry level, bridges accessed only by vertical cat ladder)

1 x Genie GR-20 Runabout (Terms of use apply)

1 x AAE Tallescope Model 50518

1 x Zarges 12 Rung Skymaster 3 Piece Ladder

1 x Zarges 8 Rung Skymaster 3 Piece Ladder

Selection of A Frame Stepladders

Various other access equipment may be available depending on usage of general stock including tallescopes.

**Please note that it is our in-house policy not to move the tallescope whilst the basket is occupied unless at least one member of the team undertaking the use has been formally trained to do so and an individual risk assessment has been put in place for the specific activity. Please contact the Tech Ops dept. to discuss any issues you may have. Please be aware unless all of our policies are adhered to, RWCMD staff will refuse to move or the tallescope.

Power

Overall Production Power is limited to 200A 3phase

Terminates in Powerlock Tails (usually feeds in house dimmers)

125A3ph Ceeform also within the dimmer room adjacent to the space

In Addition to this there are several 13a & 15A tech power supplies through the space which are included in the “production power” supply.

63A1ph in control room at rear of seating bank. Usually used as sound power for larger events.

The house dimmers consist of 3 x ART2000 racks which have 1 x 32A3ph and 3 x 16A1ph aux sockets per rack.

1 x 32A3ph in scene dock with cable trap to USC. (back wall floor level)

Control Room

The control room is only really usable if the seating bank is in use or “open” to the space. There is enough space to accommodate sound, lx and SM with ease. NB windows do not open (please call to discuss operating positions)

Lighting

Working Light & Houselights:

Unison System with Control panels around space, option of DMX control

Seating Bank Houselights are Dimmable Halogen/Par38.

Working light is a mixture of dimmed LED bulkhead units and LED/MBI floods

Dimming & Control:

3 x Avolites ART2000 48way racks.

c/w	10 x 12 way dimmer bays	120 Dimmers
	1 x 12 way relay bay	12 Relays
	1 x 12 way Hard power bay (No dmx control)	12 Hot Circuits

The Bute does not have a specific allocated Lighting desk. All Desks are kept in a central stock and allocated as necessary. Desks include: ETC Ion/Gio/Nomad, Grand MA2, Avolites Tiger Touch II, Zero88 FLX/Jesters.

Patching of dimmers is via a socapex patch, with 36 outlets throughout the venue. There are several 15A Independants and 13A tech power located around the space

Standard Lantern Stock:

32 x Robert Juliat 310H 1.2kw Fresnels

12 x ETC Source 4 zoom 25/50

10 x Selecon Pacific 12/28

20 x Par64 Can Long

10 x Strand Coda 1000/1

Various other lanterns may be available, please contact us to discuss your requirements.

DMX House Patch

Houselights:	451-453
FOH VOMS:	455-456
Bulkhead Workers:	457-460

Workers:	461-463
----------	---------

It is NOT possible to change these addresses

Art2000 Dimmers usually addressed 1 - 144 (can be changed)

Sound

(Stock is allocated on a show by show basis, please call to discuss your requirements)

Martin Audio "Wavefront" System Comprising of:
4 x Martin Audio W2 full range (Hanging cradles available)
4 x Martin Audio WS2A Subs
2 x Martin DX1 Controller
2 x Martin MA1.3S Amp
2 x Martin MA1.6S Amp
This system is not rigged as standard

50m 36send/12 return multicore available upon request.

The venue does not have a permanent specified Sound desk as they are allocated on show by show bases. Manufacturers include: DigiCo, Yamaha, Roland, Soundcraft, Midas, Allen & Heath & Behringer.

We have a wide variety of microphones, DIs, outboard and sources including Q-lab systems. Please call to discuss your requirements

There is NO fixed sound control position, please call to discuss.

Additional Equipment:

The RWCMD houses a significant central stock of equipment in addition to the Bute Theatre Standard Stock.

This includes:

- Martin, Varilite & Robe Intelligent fixtures
- Robe, ETC & Chauvet LED Fixtures
- Look Solutions & Lemaitre smoke/haze machines
- Trantec & Shure Radio Microphones
- D&B and EM monitor systems
- D&B, Axys, EM, Martin Audio, JBL & Bose speaker systems
- Panasonic 6k and 10k projectors
- Roland & Kramer Video switchers and vision mixers
- Various Cameras
- Mac Q-lab systems
- Lodestar D8+ Motors and 1t Manual Chain Blocks
- Prolyte & Astralite truss
- LeMaitre Pyrotechnic equipment

All of this equipment is subject to availability and additional cost may be incurred.

Stage Management

1 x GDS DSM Desk inc 2 x TV, Comms & Calls, 12 way cue light control
10 x GDS Cue Light outstations (Via Patch bay) + fixed position cue lights
1 x Canford Dual Channel Comms Basestation (points throughout venue)
Up to 8 x Canford Comms Headsets & Beltpacks

Drapes & Masking:

General stock of Black serge masking consisting of:

4 x Black Serege Borders (12m x 1.2m)

8 x Black Serge Borders (6m x 1.2m)

8 x Black Serge Legs (3m x 6.5m)

12 x Black Serge Legs (2m x 5.8m) Usually hung 6 per side as up/down masking

8 x Black Serge Tabs (6m x 6.5m)

TripleE Unibeam tab track in wrap around format (cuts off seating bank)

12 x 2m

Variety of Black Masking Flats available depending on usage in other venues.

Staging

The Bute Theatre does not have a dedicated stock of staging, however a small stock of 2m x 1m Metro-deck and 8ft x 4ft Lite-deck is kept on site and needs to be booked in advance. A Significant portion of our staging stored off site at our scenic workshops. This may incur an additional charge.

Up to 18 Metrodeck units and various handrails usually available to create audience seating banks (please call to discuss)

Follow spots

There is no “easy” provision for Followspots at present. Please call to discuss your requirements

Dressing rooms

1 x Dressing room with lit mirrors and worktops (must be booked in advance)
Toilets and showers adjacent (shared with costume dept.)

If necessary, it may be possible to book some of our rehearsal studios as additional dressing rooms. This is subject to availability and additional charges.
NB access is through FOH

Wardrobe

Wardrobe and laundry facilities must be arranged in advance as they are shared with the in-house costume department. Please note that there is no provision for touring equipment.

Irons, Ironing boards and additional costume rails can be made available upon request.

Refreshments

There are no catering facilities backstage. However the FOH Café bar and the College refectory are open throughout the day serving a good selection of hot and cold meals as well as drinks and snacks.

Alternatively, Cardiff City Centre is only a 5-10min walk from the RWCMD where you will find all of your standard City centre eateries and restaurants.

Photocopying

This can be arranged by the Duty Technician or House Manager, and will be charged for.

Telephone & Internet Access

The RWCMD public Wi-Fi (The Cloud) is available throughout the theatre and backstage areas. Please contact us to discuss any additional requirements

Charges & Consumables

We have a limited stock of Colour (LEE & ROSCO) on site, use of which will be charged to the company at £5.00 per sheet

Gaffer Tape will be charged at £6.50 per roll

PVC Tape will be charged at £1.50 per roll

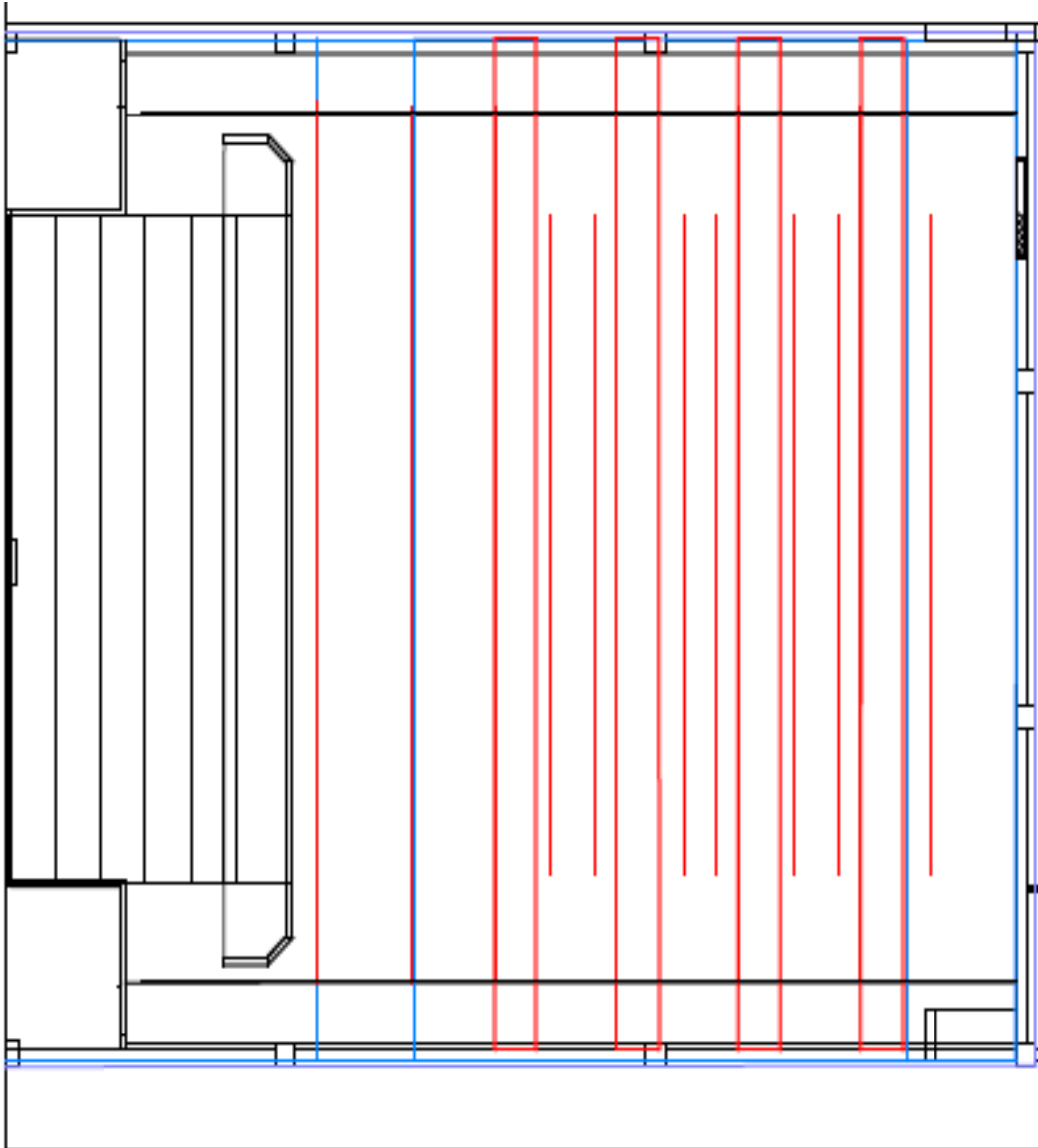
All other equipment charges to be discussed with the Duty Technician.

FOH Merchandising & Programmes

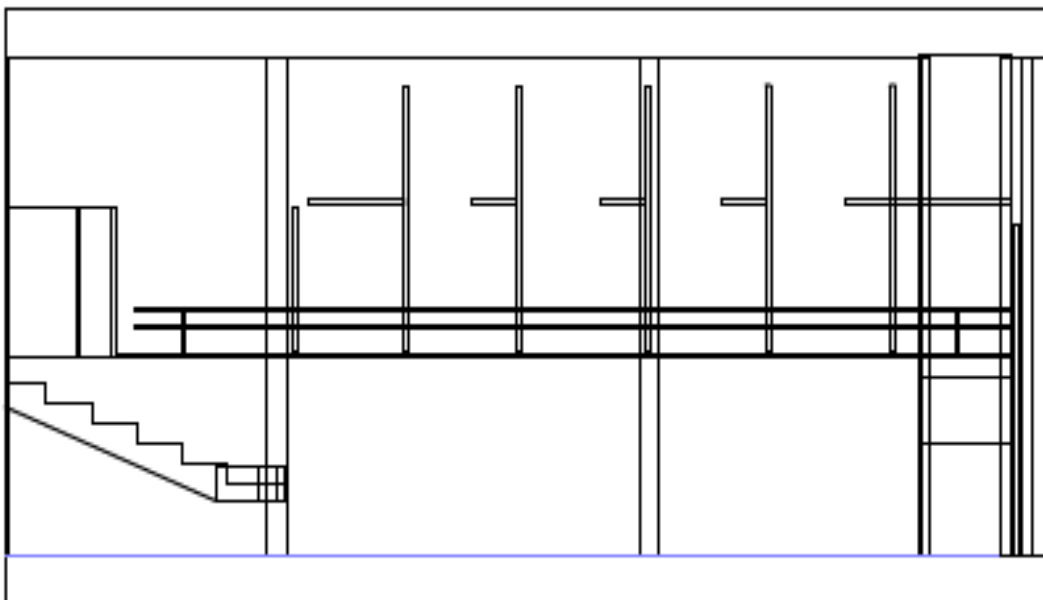
Please contact the FOH team to discuss your requirements. Charges may apply.

Venue Plans

Full CAD plans of the theatre are available upon request.



PLAN
VIEW
NOT TO
SCALE



SIDE
VIEW
NOT TO
SCALE