

CWMNI
RICHARD BURTON
COMPANY

THE MOORS

Gan | By
JEN SILVERMAN

Cyfarwyddwr | Director
PATRICIA LOGUE

 /RWCMD  @RWCMD  #RWCMD #RICHARDBURTONCOMPANY

ROYAL WELSH COLLEGE
OF MUSIC & DRAMA
COLEG BRENHINOL
CERDD A DRAMA CYMRU

Tocynnau | Tickets £5
Gwylwch Ar-Lein | Watch Online
www.rwcmd.ac.uk

CYFRES MEWN CAMERA IN CAMERA SERIES

Gan | By
Jen Silverman

Cyfarwyddwr | Director
Patricia Logue

Mawrth 19 Ionawr
Tuesday 19 January
7.30pm

Lleoliad | Venue
Online

Filmed in the Richard Burton
Theatre, RWCMD in autumn 2020

Ffilmwyd yn Theatr Richard Burton,
CBCDC yn ystod hydref 2020

THE MOORS

1840. The Moors. Yorkshire.
A young governess arrives at an
isolated manor house under the
promise of employment and
love – but where is her master?

Following the tropes of a Victorian gothic
novel with a fictional version of the
Bronte sisters as a launch, The Moors is
a raunchy, creepy and funny play about
love, visibility and female empowerment.

With a subversive, contemporary
spin – and a depressed Mastiff dog
that will devour your face – this is
Victorian life on the moors as you've
never seen it before.

#richardburtoncompany

1840. Y Moors. Yorkshire. Mae
athrawes ifanc yn cyrraedd
maenordy ynysig o dan yr
addewid o gyflogaeth a chariad
– ond ble ydy ei meistri hi?

Yn dilyn trofannau nofel gothig Fictoriaidd
gyda fersiwn ffuglennol o'r chwiorydd
Brontë fel lawns, mae The Moors yn
ddrama rhywiol, iasol a doniol am gariad,
gwelededd a grym menywod.

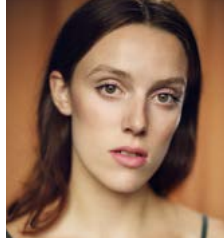
Mewn ffordd cyfoes a gwrthdroadol
– a gyda chi Mastiff drist a bydd yn
nhraflyncu eich gwyneb – mae hwn yn
bywyd Fictoriaidd ar y moors fel nad
ydych wedi gweld o'r blaen.

www.rwcmd.ac.uk

CAST



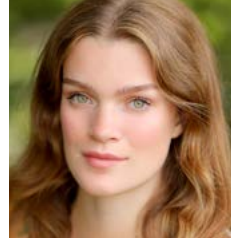
Huldey
Rue Blenkinsop



Emilie
Thea Mayeux



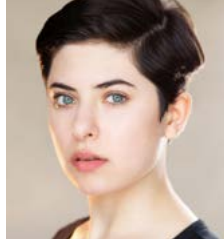
The Mastiff
Archie Redford



Marjory
Emma Rivers



Agatha
Bookie Schwartz



A Moor-Hen
Natalie Valentine

TŪM CYNHYRCHU PRODUCTION TEAM

Cynllunydd Set Set Designer

Jo Loftin

Cynllunydd Gwisg Costume Designer

Lucile Russing

Cynllunydd Goleuo Lighting Designer

Danny Vavrecka

Cynorthwydd Goleuo Lighting Assistant

Chloe French

Cynllunydd Sain Sound Designer

James Pearce

Cynorthwydd Sain Sound Assistant

Lewis Murray

Is-Reolwr Cynhyrchu Assistant Production Manager

Kanoko Tobe

Rheolwr Llwyfan Stage Manager

Bella Kelaidi

Dirprwy Reolwr Llwyfan Deputy Stage Manager

Ray Young

Is-Reolwyr Llwyfan Assistant Stage Managers

Jacob Mottershead

Mara Hornschemeyer

Cyfathrebydd Cynllunio Design Communicator

Alina Soare

Cynorthwywyr Gwisg Costume Assistants

Anastasia Crossley

Arianna Mafinni

Artistiaid Golygfaol Scenic Artists

Aidan Biddiscombe

Mollie Cheek

Fenna Dejonge

Xiaoyuan Hou

Aleksandra Klos Ruxin

Lyu Alina Soare

Bethan Wall

Ning Xian

Technegwyr | Technicians

Rebecca Harker

Keisha Peets

Elizabeth Nash

Technegydd Lleoliad Venue Technician

Bo Ashby-Crane

Goruchwylwyr | Supervisors

Ian Barnard

Karly Hill

Laura Martin

Katy Morison

DIOLCH I WITH OUR THANKS TO

T & M Technical Services

STAFF CBCDC RWCMD STAFF

ACTIO A THEATR GERDD ACTING & MUSICAL THEATRE

Jonathan Munby
Vivien Care
Louisa Clarke
Jamie Garven
Patricia Logue
Kevin McCurdy
Frances Newman
Suzanne Packer
Eryl Huw Phillips
Pip Reeves
Simon Reeves

SWYDDFA DRAMA DRAMA OFFICE

Heather Davies
Sian Jones
Mitzy Wilson

CYNHYRCHU A CHYNLLUNIO PRODUCTION & DESIGN

Rorie Brophy
Rob Clarke
Sean Crowley
Allie Edge
Ian Evans
Lucy Hall
Emma Hele
Daz James
Mike Robinson
Jen Rowlands

DIGWYDDIADAU EVENTS

Laura Avery
Tracey Bishop
Will Darke
Chris Flavin
Naomi Griffiths
Matt Jones
Penny King
Leigh Kirk-Harris
Joanna Kyiet
Jo Marriott
Steve McEvoy
Lisa Morris
Rebecca Rigby
Matt Rogerson
Janet Smith
Cerys Wyn-Williams

UWCH DŪM RHEOLI SENIOR MANAGEMENT TEAM

Professor Helena Gaunt
Mark Davies
Sean Crowley
Jonathan Munby
Kevin Price
Tim Rhys-Evans
Kate Stokes Davies
Lucy Stout
Brian Weir

BWRDD CYFARWYDDWYR BOARD OF DIRECTORS

Professor Helena Gaunt
John Derrick (Chair)
Manon Antoniazzi LVO
Mario Ferrelli
Natasha Hale
Julie Lydon OBE
Aled Miles
Roger Munnings
Jemma Terry
Nia Thomas
Brian Weir

Gyda diolch i'r holl staff ar draws
y Coleg sydd wedi cynorthwyo
i lwyfanu'r cynyrchiadau hyn.

With thanks to all staff across the
College who have assisted in the
staging of these productions.

YNGLŶN Â CHWMNI RICHARD BURTON ABOUT THE RICHARD BURTON COMPANY

The Richard Burton Company is the Royal Welsh College of Music and Drama's own in-house theatre company.

It is made up of undergraduate and postgraduate actors, stage managers, theatre designers and musical theatre performers. As one of Wales' most prolific repertory companies, the Richard Burton Company stages around fifteen productions each year ranging from classic plays to contemporary drama, new writing and musical theatre.

This amateur production of 'The Moors' is presented by arrangement with **Concord Theatricals Ltd.** on behalf of Samuel French Ltd. www.concordtheatricals.co.uk

'The Moors' Off-Broadway premiere produced by The Playwrights Realm (Katherine Kovner, Artistic Director; Roberta Pereira, Producing Director) in January 2017 World Premiere produced by Yale Repertory Theatre, New Haven, Connecticut, James Bundy, Artistic Director, Victoria Nolan, Managing Director.

The videotaping or making of electronic or other audio and/or visual recordings or streams of this production is strictly prohibited, a violation of United Kingdom Copyright, Designs and Patents Act 1988 and an actionable offense.

Cwmni Theatr Mewnol Coleg Brenhinol Cerdd a Drama Cymru yw Cwmni Richard Burton.

Mae'n cynnwys actorion, rheolwyr llwyfan, cynllunwyr theatr a pherfformwyr theatre gerdd israddedig ac ôl-radd. Fel un o theatrau cwmni mwyaf toreithiog Cymru, bydd Cwmni Richard Burton yn llwfanu pymtheg cynhyrchiad bob blwyddyn, yn amrywio o ddramâu clasurol i waith cyfoes, ysgrifennu newydd a theatr gerdd.

Cyflwynir y cynhyrchiad amatur hwn o 'The Moors' drwy drefniant gyda **Concord Theatricals Ltd.** ar ran Samuel French Ltd. www.concordtheatricals.co.uk

Premiere Oddi ar Broadway 'The Moors' a gynhyrchwyd gan The Playwrights Realm (Katherine Kovner, Cyfarwyddwr Artistig; Roberta Pereira, Cyfarwyddwr Cynhyrchu) ym mis Ionawr 2017 Premiere Byd a gynhyrchwyd gan Yale Repertory Theatre, New Haven, Connecticut, James Bundy, Cyfarwyddwr Artistig, Victoria Nolan, Rheolwr Gyfarwyddwr.

Gwaherddir gwneud tapiau fideo neu recordiadau electronig neu recordiadau sain a/neu weledol eraill o ffrydiau'r cynhyrchiad hwn - byddai hynny'n torri Deddf Hawlfraint, Dyluniadau a Phatentau 1988 y Deyrnas Unedig ac yn drosedd gyfreithadwy.

Cefnogir drama yng Ngholeg Brenhinol Cerdd a Drama Cymru gan: Drama at the Royal Welsh College of Music & Drama is supported by:

The Carne Trust, The Hodge Foundation, Simon Gibson Charitable Trust, Leverhulme Trust, Gregory Nasmyth and the Hon. Samantha Rowe-Beddoe, Spielman Charitable Trust, Peter and Janet Swinburn, the late Neil and Mary Webber, The Mosawi Foundation, Catherine Zeta-Jones CBE FRWCMD, Sean Mathias and the late Jackie Skarvellis.