

Conferences and events at the College

A digital viewing.



Welcome to the Royal Welsh College of Music & Drama

The Royal Welsh College of Music & Drama is set in the grounds of Cardiff Castle bordering one of the largest and most beautiful parks in the UK.

Our sought-after suite of world-class conference and meeting facilities host major conferences and meetings such as NATO, the Academy of Marketing International Conference, the European Association of Health Information Libraries Conference and the World Stage Design Expo.

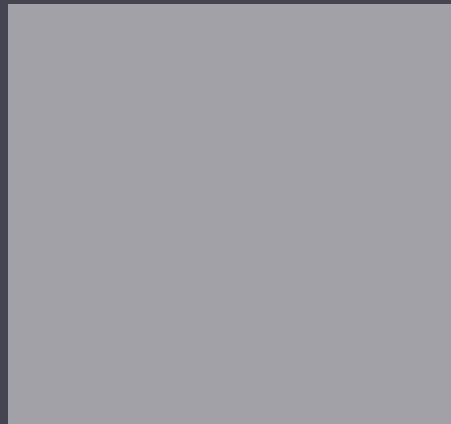
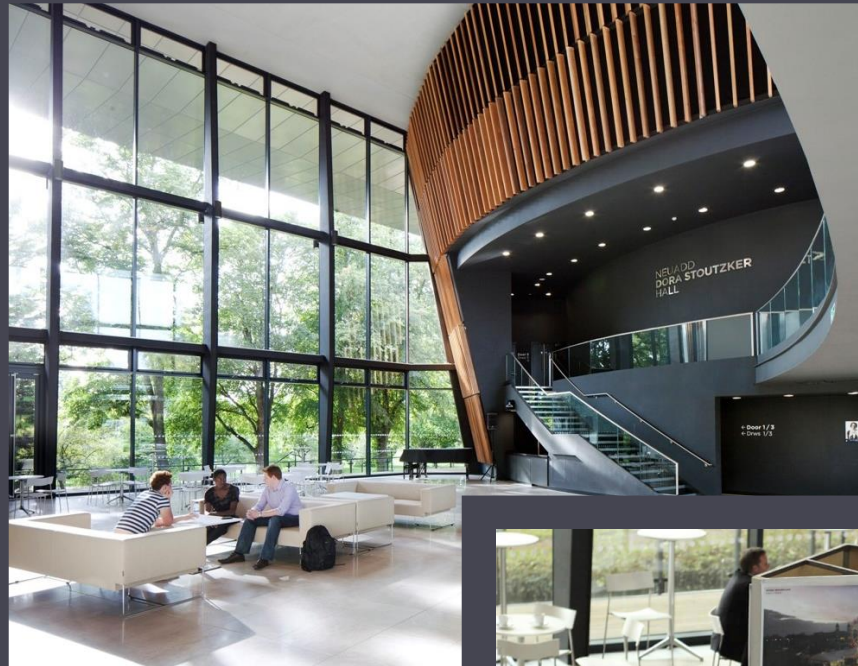
At the Royal Welsh College of Music & Drama you'll be fully supported by our team giving you the highest standards of professional conference planning, experienced technical support, fine quality catering, welcoming customer care and star performance talent.

Let's begin the tour....

'Croeso'

A very warm Welsh welcome to you all.

The Carne Foyer is a beautifully welcoming open space for registration with lots of natural light - perfect for your delegates, exhibitors and presenters to settle in and begin networking.

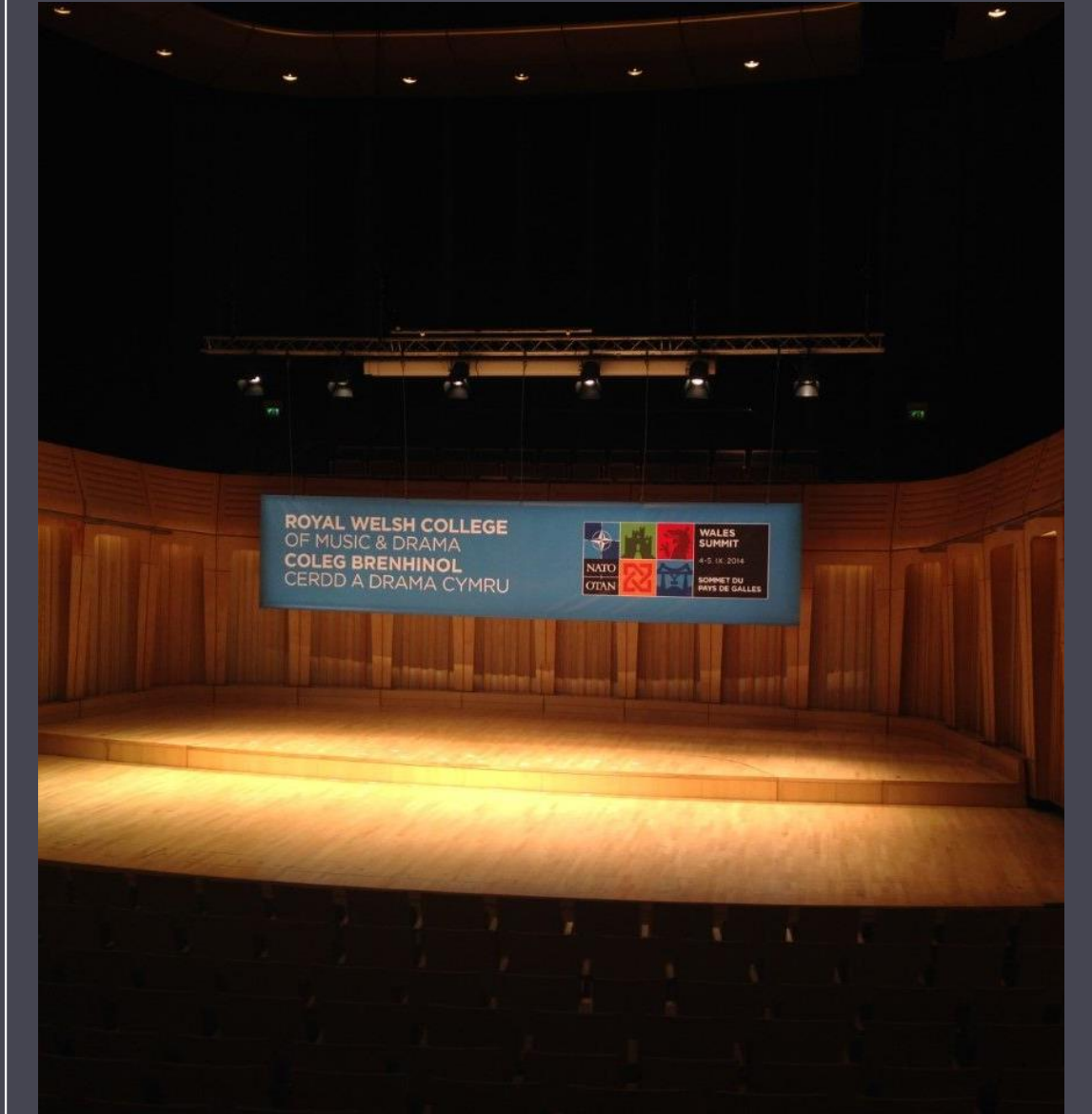


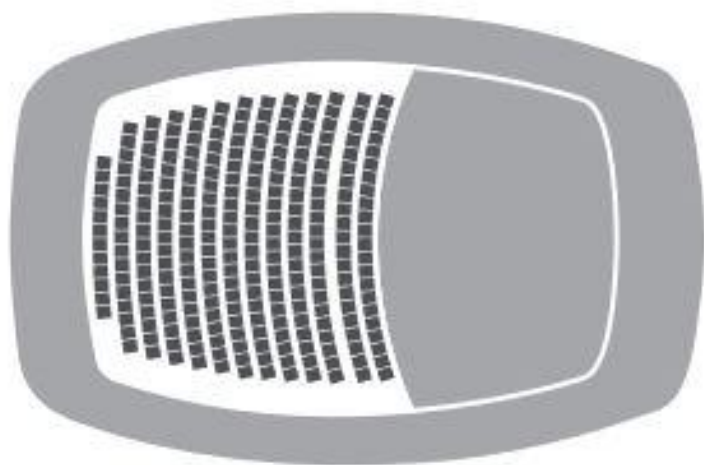
Dora Stoutzker Concert Hall

The Royal Welsh College of Music and Drama's £22m suite of venues includes the magnificent Dora Stoutzker Concert Hall with a capacity of 350 seats.

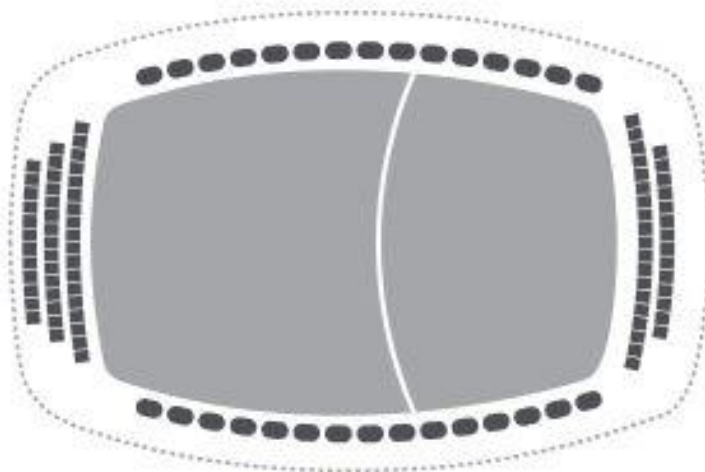
Combining elegant contemporary architecture with state-of-the-art acoustics, the hall is a very impressive setting for a high-profile event.







Stalls | Seddi

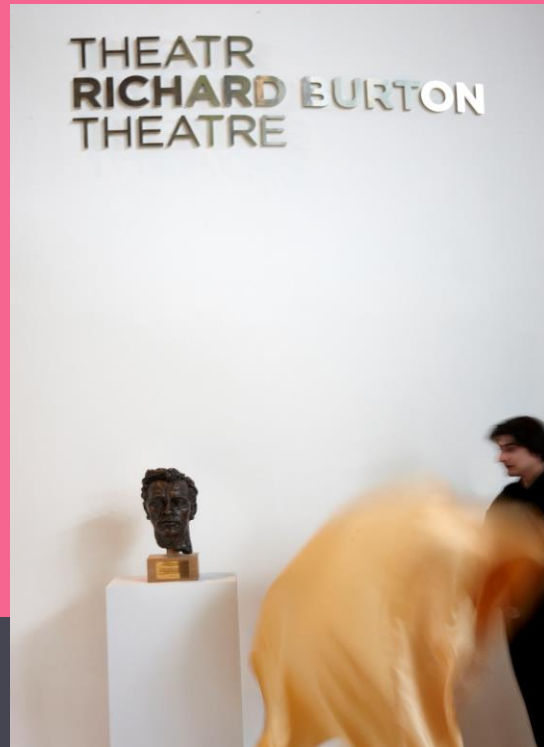


Circle | Cylch

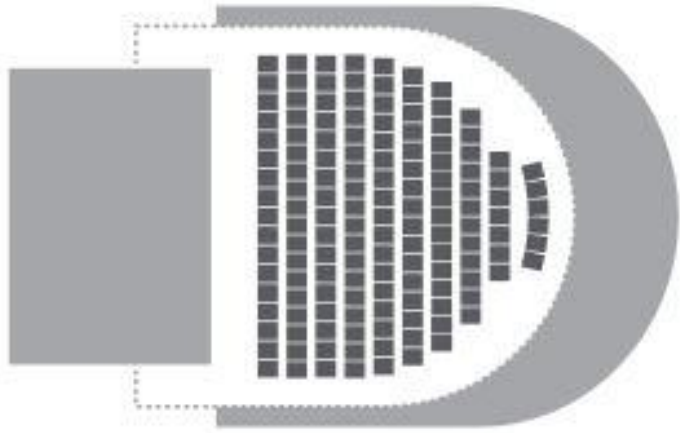
**Dora Stoutzker Hall |
Neuadd Dora Stoutzker**
Stage 14m x 9m (at its widest)
105 m²
250 - 350 Theatre-style

Richard Burton Theatre

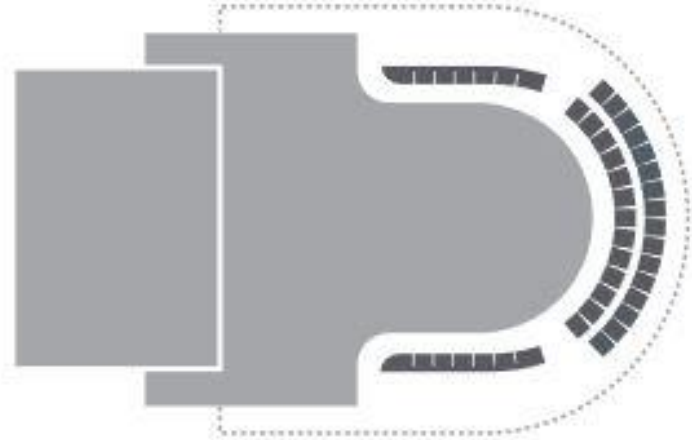
Our magnificent Richard Burton Theatre, with its 182 seats, is a superb venue as the main space for an event or a great break-out room for a large conference.







Stalls | Seddi



Circle | Cylch

**Richard Burton Theatre |
Theatr Richard Burton**
Stage 12.5m x 9m
112 m²
139 - 182 Theatre-style

Welcoming Everyone Anywhere Digitally

Having a hybrid live and online conference at the College opens the door to increased numbers of delegates, online presenters and remote guests wherever they may be – helping you to reach beyond, extend your message, reduce travel costs and meet your environmental responsibilities.

With our in-house 21st century *Planet E-Stream* technology, our highly-skilled technicians will assist you with a range of digital options to blend the live and online experience into your bespoke event...

With our in-house 21st century *Planet e-Stream* technology, our highly-skilled technicians will assist you with a range of digital options to blend the live and online experience into your bespoke event.

- Film your event with multi-camera capture.
- Produce session recordings for archive or online 24/7 viewing.
- Stream live keynote speakers from remote locations.
- Welcome distant delegates via Skype, Teams and Zoom.
- Include off-site participants in virtual chat rooms, networking and feedback.
- Relay broadcast-quality simultaneous presentations into breakout rooms.
- Dynamically update messages on custom-branded digital signage.
- Free Wi-Fi for all delegates, organisers and exhibitors.
- Experienced in-house event management team on hand to help you plan and run the event.



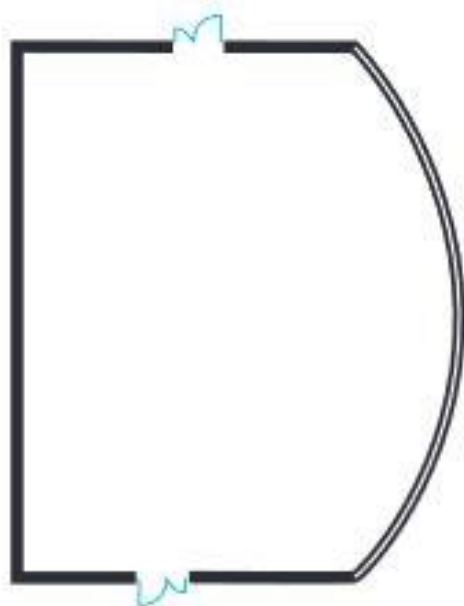
Break-out rooms

We have 14 flexible rooms that can set out to suit the style of your parallel sessions.

All our venues have free Wi-Fi and can be set up with audio visual and digital conferencing facilities.



Seligman studio



**Seligman Studio |
Stiwdio Seligman**

10m x 12.5m

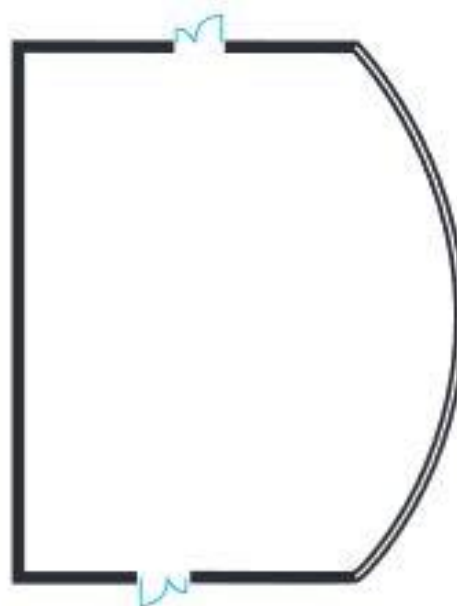
125 m²

60 Theatre-style

60 Cabaret-style

60 Reception

30 Boardroom



**Simon Gibson Studio |
Stiwdio Simon Gibson**

10m x 12.5m

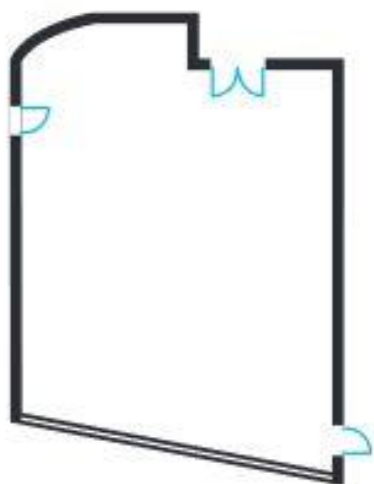
125 m²

60 Theatre-style

60 Cabaret-style

60 Reception

30 Boardroom



**Rowe Beddoe Studio |
Stiwdio Rowe-Beddoe**

9m x 13m (at its widest)

117 m²

60 Theatre-style

60 Cabaret-style

60 Reception

30 Boardroom



Studio 1 | Stiwdio 1

9m x 13.5m

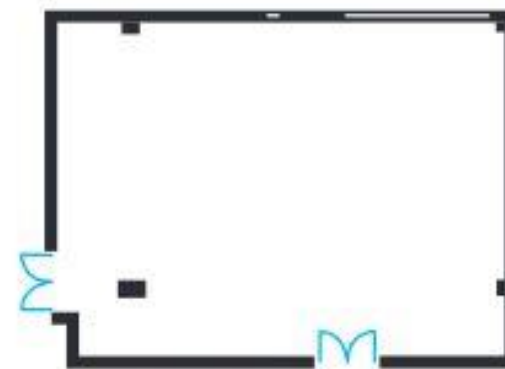
121.5 m²

60 Theatre-style

60 Cabaret-style

60 Reception

30 Boardroom



Studio 2 | Stiwdio 2

11.5m x 8.5m

98 m²

60 Theatre-style

60 Cabaret-style

60 Reception

30 Boardroom

Weston Gallery

This beautiful room is packed with character and charm and is located in our historic Anthony Hopkins Centre - originally the Cardiff Castle's stables.

70 delegates can be accommodated – ideal for a smaller conference or a break-out session.



Corus Suite

This room mirrors the style of the Weston Gallery with its stunningly beautiful spiral staircase .

It is a truly lovely setting for smaller events, for catering and for drinks receptions.





Weston Gallery | Oriel Weston

13m x 6m

78 m²

80 Theatre-style

50 Cabaret-style

80 Reception

30 Boardroom



**Corus Recital Room |
Ystafell Ddatganiad Corus**

10m x 6m

69 m²

50 Theatre-style

30 Cabaret-style

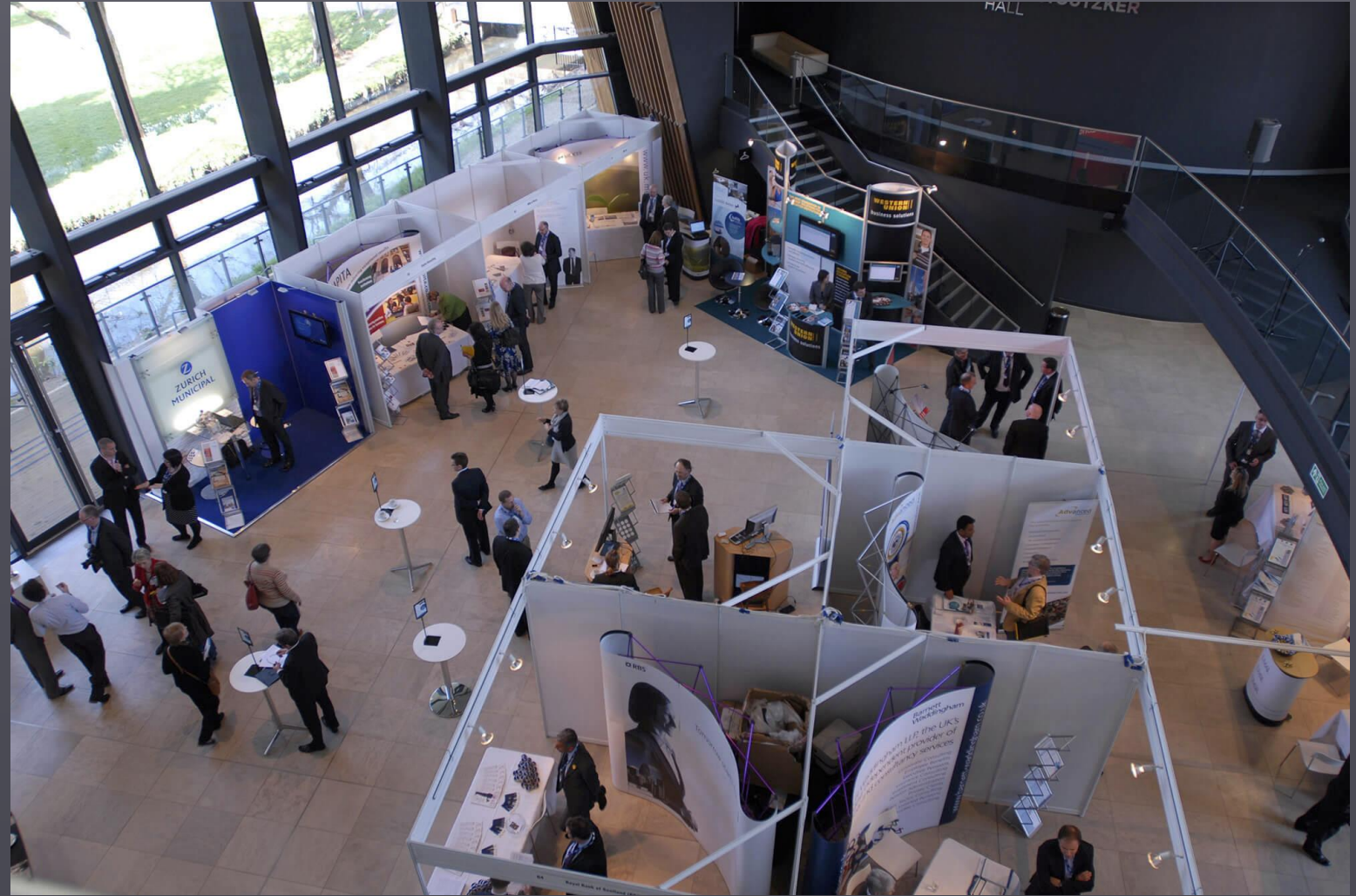
50 Reception

20 Boardroom

Exhibition Spaces

Carne Foyer

High visibility, continuous interaction with delegates and immediate impact for exhibitors – just some of the benefits from being located at the heart of your conference in our magnificent, three storey high, glass-walled foyer overlooking the Grade I listed Bute Park.





Foyer | Cyntedd

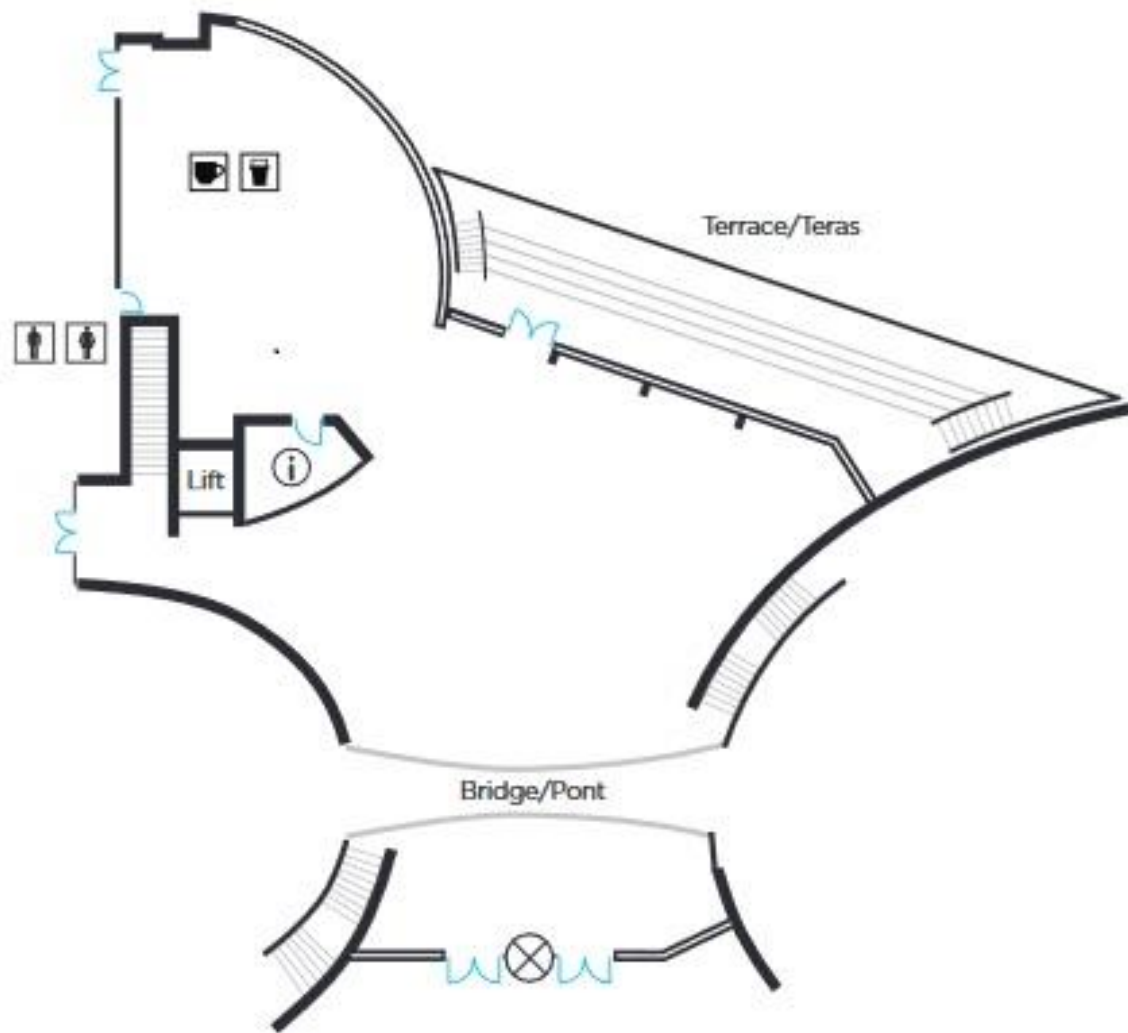
23m x 24m (at its widest)

370 m²

150 Theatre-style

200 Cabaret-style

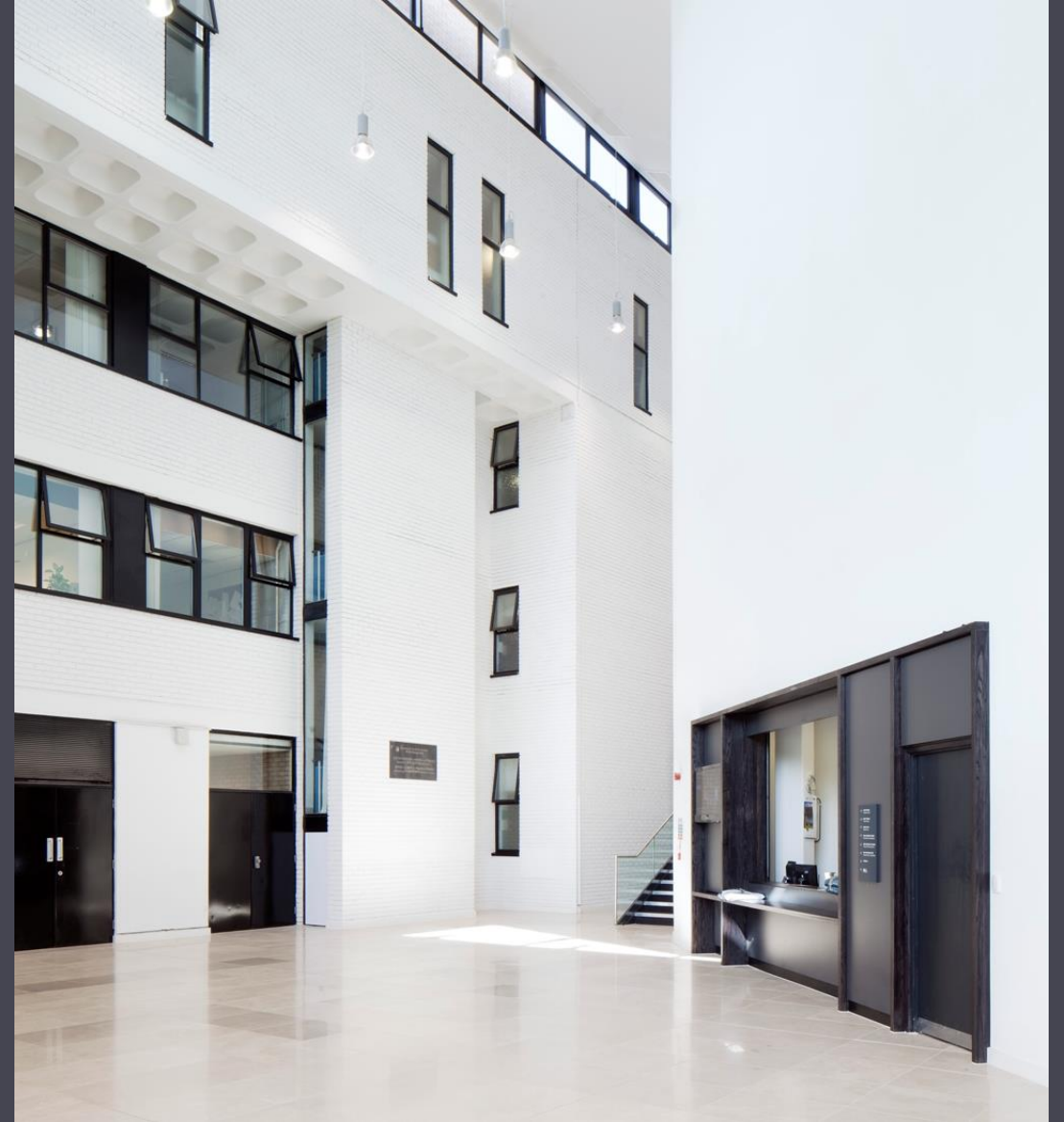
500 Reception

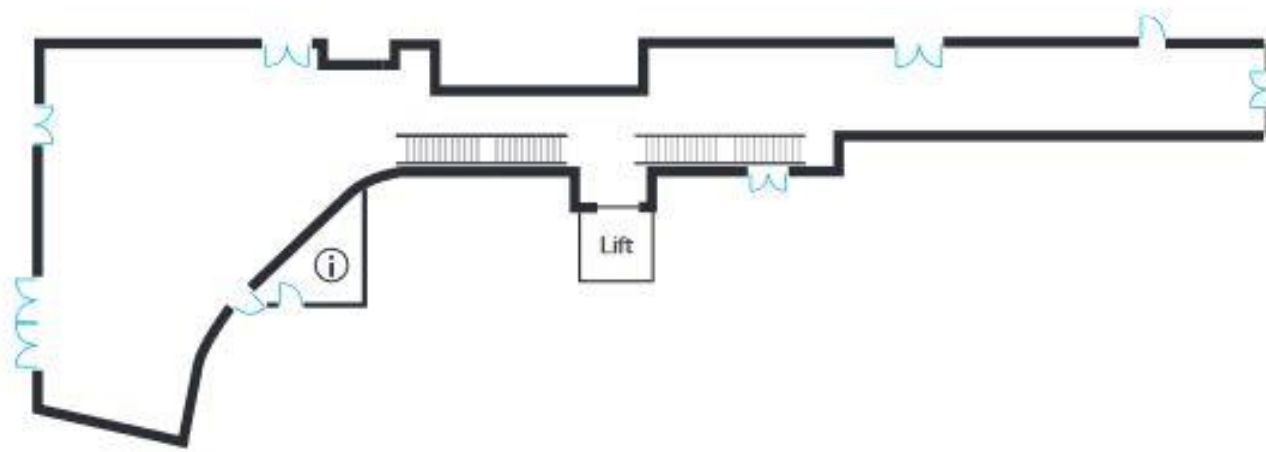


Linbury Gallery

Over 50 exhibition stands can be accommodated in our exhibition gallery which links the Carne Foyer and the break-out rooms and catering area so your exhibitors network continuously with delegates throughout the whole conference.





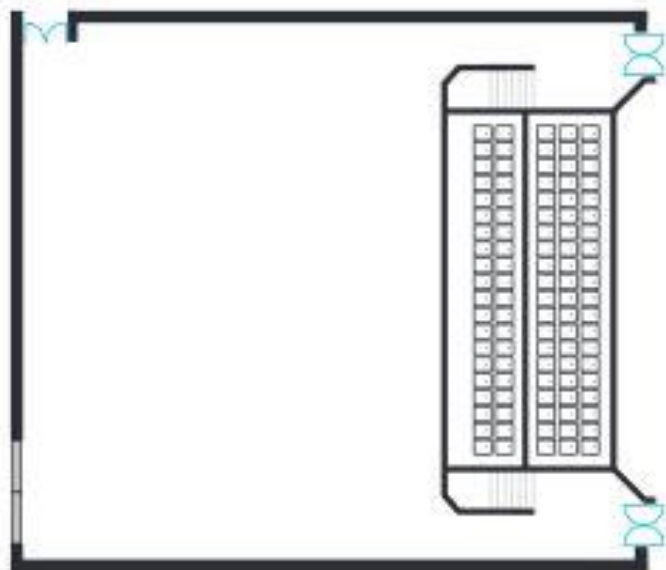


Linbury Gallery | Oriel Linbury
4m (extending to 15m) x 65m
564 m²

Bute Theatre

All our exhibition spaces are fully equipped with state-of-the-art facilities and you can expect the highest standards of exhibition planning and technical support from our very experienced professional team.





**Bute Theatre |
Theatr Bute**

Stage 14m x 15m

210 m²

160 Theatre-style

140 Cabaret-style

300 Reception

Hire A Performer

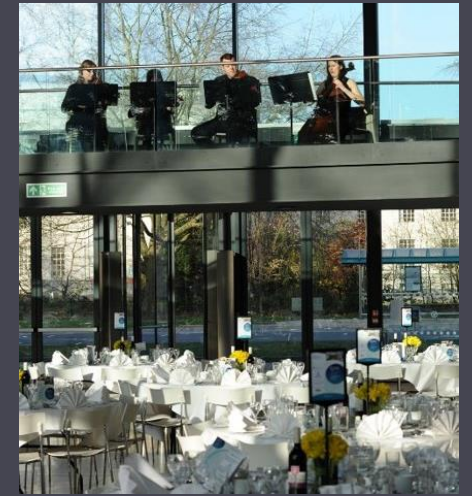
Our hugely-gifted musicians entertain royalty, heads of state and distinguished guests.

A jazz pianist, classical music ensemble or even a staged piece of performance combat by talented actors can give your drinks reception, conference or dinner the memorable and creative edge.

For assistance with booking performers at both the College and other venues, contact:

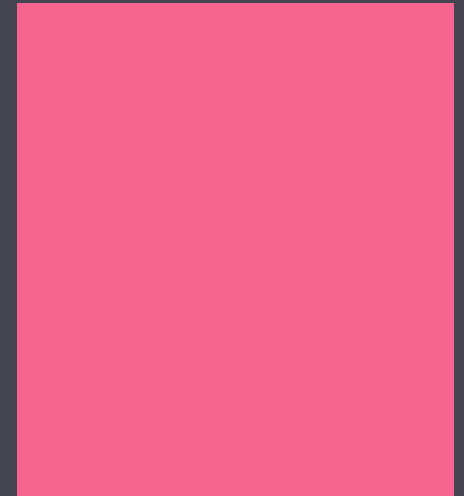
musicians@rwcmd.ac.uk

029 2039 1402



Guest Receptions

For a truly wonderful venue for your drinks reception and catering, how about our beautiful open-air terrace overlooking the Grade I-listed Bute Park and Cardiff Castle or the inimitable Anthony Hopkins Centre courtyard.





Menus

Our highly recommended in-house catering offers a range of menus to suit all budgets and tastes. You can expect the same high quality whether you are looking for simple conference refreshments, hot or cold buffet lunches, formal drinks receptions or fine-dining gala dinner functions.

[Refreshments Menu](#)

[Finger Buffet Menu](#)

[Fork Finger Buffet Menu](#)

[Canapés Menu](#)

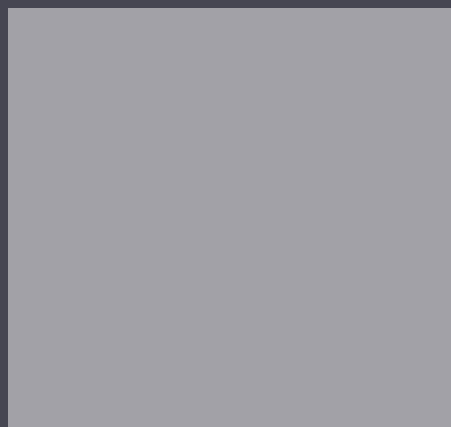
[Hot Buffet Lunch Menu](#)

[Hot Buffet Dinner Menu](#)

[BBO Style Menu](#)

[Banqueting Menu](#)

[Wine List](#)







alber
PHOTO



Formal dinner functions

Our Carne Foyer can accommodate up to 200 seated diners or up to 400 guests for a drinks reception.





During these times ...

We are very happy to provisionally book your date and venue and will postpone with no fee and no fuss should this be necessary.

Social distancing and other safety measures may continue to be required throughout 2021. We will help you to plan a COVID-safe event and will ensure you have a COVID-safe environment for everyone.

Parking, accommodation and access

There are many pay-and-display car parks all around the College and city centre multi-storey car parks just 5-10 minutes' walk from us.

The College offers on-site parking for blue-badge holders and is fully accessible to people with a range of access requirements.

Cardiff has an impressive range of overnight accommodation and as a member of Meet In Cardiff, we can offer event organisers very competitive rates.

Contact hello@meetincardiff.com

*Thank you for
'visiting' the
College. I hope you
enjoyed your
digital tour.*

For further information
contact:

Janet Smith

Venues Manager

janet.smith@rwcmd.ac.uk

