

**NEW
NEWYDD
'21**

**21 MAI | MAY
— 20 MEH | JUNE**



THE ELECTRIC

Gan | By

VICKIE DONOGHUE

Cyfarwyddwr | Director

ANTHONY SIMPSON-PIKE

**ROYAL WELSH COLLEGE
OF MUSIC & DRAMA
COLEG BRENHINOL
CERDD A DRAMA CYMRU**



/RWCMD



@RWCMD



#RWCMD

RWCMD.AC.UK

CYFRES MEWN CAMERA IN CAMERA SERIES

Gan | By

VICKIE DONOGHUE

Cyfarwyddwr | Director

ANTHONY SIMPSON-PIKE

Cyfarwyddwr Gweithdy

Workshop Director

ANITA REYNOLDS

Filmed at | Ffilmiwyd yn

THEATR Y SHERMAN

MAWRTH 2021

SHERMAN THEATRE

MARCH 2021

Ar gael | Available

21 MAI | MAY —

20 MEHEFIN | JUNE

Mewn Cydweithrediad Â

In Collaboration With

PAINES PLOUGH

THE ELECTRIC

The Electric nightclub is a sanctuary for Sasha. It is where she feels closest to her father. But its reputation is now one of faded glamour.

When everything the club has ever stood for is threatened, Sasha knows she must act. For her Dad's memory to live on, Sasha must take her revenge - in the most violent and bloody way possible.

The Electric is a contemporary re-telling of Electra by Sophocles, set in an Essex night club. It is a story about grief, greed and growing up.

Mae clwb nos Electric yn noddfa i Sasha. Yno mae hi'n teimlo agosaf at ei thad. Ond erbyn hyn mae enw da'r clwb wedi hen bylu.

Pan fo popeth y mae'r clwb yn sefyll drosto dan fygythiad, mae Sasha'n gwybod bod yn rhaid iddi weithredu. Er mwyn i'r cof am ei thad barhau, mae'n rhaid i Sasha ddial - yn y modd mwyaf treisgar a gwaedlyd posibl.

Ail-adroddiad cyfoes o Electra gan Sophocles yw Electric, sydd wedi'i lleoli mewn clwb nos yn Essex. Mae'n stori sy'n ymdrin â galar, trachwant a thyfu i fyny.

CAST



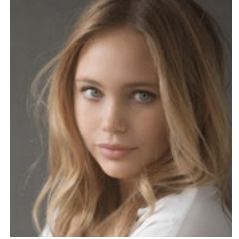
Daisy
Rue Blenkinsop



Chanel
Zoe Goriely



Andy
Andrew McCracken



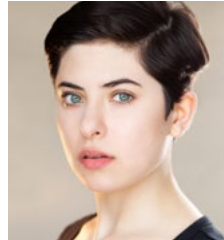
Sasha
Tallulah Evans



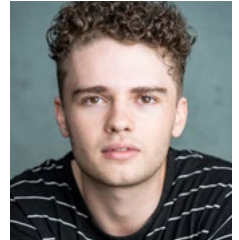
Joe
Luke Merchant



Charlie
Archie Redford



Alexa
Natalie Valentine



Den
James Wilbraham

TŪM CYNHYRCHU PRODUCTION TEAM

TŪM CYNHYRCHU PRODUCTION TEAM

Cynllunydd Set Set Designer

Dan Southwell

Cynllunydd Gwisg Costume Designer

Tierney Dore

Cynllunydd Goleuo Lighting Designer

Paul Kaiba

Cynorthwy-ydd Goleuo Lighting Assistant

Mattia Giubasso

Cynllunydd Sain Sound Designer

Lewis Murray

Rheolwr Llwyfan Stage Manager

Zoe Wales

Dirprwy Reolwr Llwyfan Deputy Stage Manager

Jacob Mottershead

Is-Reolwyr Llwyfan Assistant Stage Managers

Felicity Bulbulia

Lara Welford

Cynorthwywyr Set Set Assistants

Vada Baldwin

Ellen Brown

Amy Howard

Millie Lamkin

Sabirin Osman

Anton Schilbach

Chloe Stoakes

Emily Warman

Cynorthwy-ydd Gwisg Costume Assistant

Isabel Carter

Celine Kramer

Technegwyr Technicians

Niamh Fishwick

Emily Foster

Goruchwylwyr Supervisors

Dominic Bilkey

Chaz Creighton-Griffiths

Laura Martin

Ali Palmer

Dave Roxburgh

Nathan Williams

Cefnogaeth Llais Voice Support

Rhian Cronshaw

YMWADIAD: Cafodd y cynhyrchiad yma ei greu trwy arsylwi cyfyngiadau Covid-19 er mwyn lles a diogelwch y cast a'r criw. Am unrhyw ymholiadau sy'n ymwneud â chanllawiau a rhagofalon, cysylltwch â info@rwcmd.ac.uk os gwelwch yn dda.

DISCLAIMER: This production was made observing Covid-19 restrictions for the safety of all cast and crew. For any queries regarding guidelines and precautions observed, please contact info@rwcmd.ac.uk.

STAFF CBCDC RWCMD STAFF

ACTIO A THEATR GERDD ACTING & MUSICAL THEATRE

Jonathan Munby
Claire Brown
Vivien Care
Louisa Clarke
Jamie Garven
Patricia Logue
Kevin McCurdy
Frances Newman
Suzanne Packer
Eryl Huw Phillips
Pip Reeves
Simon Reeves

SWYDDFA DRAMA DRAMA OFFICE

Heather Davies
Sian Jones
Mitzy Wilson

CYNHYRCHU A CHYNLLUNIO PRODUCTION & DESIGN

Rorie Brophy
Rob Clarke
Sean Crowley
Allie Edge
Ian Evans
Lucy Hall
Emma Hele
Daz James
Mike Robinson
Jen Rowlands

DIGWYDDIADAU EVENTS

Laura Avery
Tracey Bishop
Will Darke
Chris Flavin
Naomi Griffiths
Matt Jones
Penny King
Leigh Kirk-Harris
Joanna Kyiet
Jo Marriott
Lisa Morris
Kristian Rhodes
Rebecca Rigby
Matt Rogerson
Janet Smith
Cerys Wyn-Williams

UWCH DŪM RHEOLI SENIOR MANAGEMENT TEAM

Professor Helena Gaunt
Mark Davies
Sean Crowley
Jonathan Munby
Kevin Price
Tim Rhys-Evans
Kate Stokes Davies
Lucy Stout
Brian Weir

BWRDD CYFARWYDDWYR BOARD OF DIRECTORS

Professor Helena Gaunt
John Derrick (Chair)
Manon Antoniazzi LVO
Mario Ferrelli
Natasha Hale
Lucy Hall
Julie Lydon OBE
Aled Miles
Roger Munnings
Jemma Terry
Nia Thomas

Gyda diolch i'r holl staff ar draws
y Coleg sydd wedi cynorthwyo
i lwyfannu'r cynyrchiadau hyn.

With thanks to all staff across the
College who have assisted in the
staging of these productions.

YNGLŶN Â CHWMNI RICHARD BURTON ABOUT THE RICHARD BURTON COMPANY

The Richard Burton Company is the Royal Welsh College of Music & Drama's own in-house theatre company.

It is made up of undergraduate and postgraduate actors, stage managers, theatre designers and musical theatre performers. As one of Wales' most prolific repertory companies, the Richard Burton Company stages around fifteen productions each year ranging from classic plays to contemporary drama, new writing and musical theatre.

Cwmni Theatr Mewnol Coleg Brenhinol Cerdd a Drama Cymru yw Cwmni Richard Burton.

Mae'n cynnwys actorion, rheolwyr llwyfan, cynllunwyr theatr a pherfformwyr theatre gerdd israddedig ac ôl-radd. Fel un o theatrau cwmni mwyaf toreithiog Cymru, bydd Cwmni Richard Burton yn llwfannu pymtheg cynhyrchiad bob blwyddyn, yn amrywio o ddramâu clasurol i waith cyfoes, ysgrifennu newydd a theatr gerdd.

Cefnogir drama yng Ngholeg Brenhinol Cerdd a Drama Cymru gan:
Drama at the Royal Welsh College of Music & Drama is supported by:

The Carne Trust, The Hodge Foundation, Simon Gibson Charitable Trust, Leverhulme Trust, Gregory Nasmyth and the Hon. Samantha Rowe-Beddoe, Spielman Charitable Trust, Peter and Janet Swinburn, the late Neil and Mary Webber, The Mosawi Foundation, Catherine Zeta-Jones CBE FRWCMD, Sean Mathias and the late Jackie Skarvellis.