

CWMNI
RICHARD BURTON
COMPANY

EVERYBODY

Gan | By
BRANDEN JACOBS-JENKINS

Cyfarwyddwr | Director
PHILLIP BREEN



 /RWCMD  @RWCMD  #RWCMD #RICHARDBURTONCOMPANY

ROYAL WELSH COLLEGE
OF MUSIC & DRAMA
COLEG BRENHINOL
CERDD A DRAMA CYMRU

Tocynnau | Tickets £5
Gwylwch Ar-Lein | Watch Online
www.rwcmd.ac.uk

CYFRES MEWN CAMERA IN CAMERA SERIES

Gan | By
Branden Jacobs-Jenkins

Cyfarwyddwr | Director
Phillip Breen

Ar gael | Available
10-24 Ebrill | April

Lleoliad | Venue
Online

Ffilmwyd yn Theatr Richard Burton,
CBCDC yn ystod Chwefror 2021

Filmed in the Richard Burton Theatre,
RWCMD in February 2021

EVERYBODY

Life is a lottery, but one thing is certain. Death comes to us all. And when death approaches, can we account for our actions?

This terrifyingly funny show is a modern twist on a fifteenth-century morality play, and takes Everybody on a journey to find salvation.

With 120 different casting possibilities, this experimental piece of theatre is also a lottery. Our actors find out which part they will play, at the beginning of the show.

Mae bywyd yn loteri, ond mae un peth yn sicr. Daw marwolaeth i bawb ohonom. A phan fydd marwolaeth yn nesáu, a allwn ni roi cyfrif am ein gweithredoedd?

Mae'r sioe hynod ddoniol hon yn wedd fodern ar ddrama foesoldeb o'r bymthegfed ganrif, sy'n mynd â phawb ar siwrnai i ganfod iachawdwriaeth. Gyda 120 o wahanol bosibiliadau castio, mae'r darn theatr arbrofol hwn hefyd yn loteri. Bydd ein hactorion yn cael gwybod pa ran fyddant yn ei chwarae ar ddechrau'r sioe!

CAST



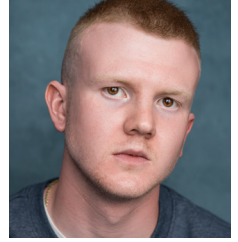
Somebody
Tallulah Evans



Somebody
James Grimm



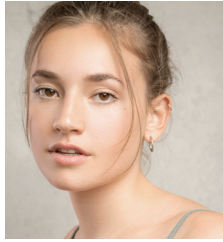
Somebody
Blair Gyabaah



Somebody
Stuart Quigley



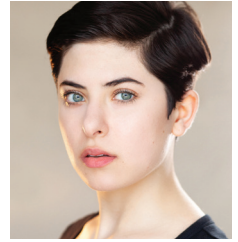
Somebody
Emma Rivers



Somebody
Matilda Rowe



Somebody
Bookie Schwartz



**Stage Manager / God /
Understanding**
Natalie Valentine

Young Child
Layla Talfan-Davies

TÎM CYNHYRCHU PRODUCTION TEAM

TÎM CYNHYRCHU PRODUCTION TEAM

Cynllunydd Set a Gwisg Set and Costume Designer

Oscar Morris

Cynllunydd Goleuo

Lighting Designer

Ella Dijle Cunnison

Cynllunydd Sain

Sound Designer

Lewis Murray

Cynorthwydd Sain

Sound Assistant

Merlin de Charon de St
Germain

Rheolwr Llwyfan

Stage Manager

Helen Yates

Dirprwy Reolwr Llwyfan

Deputy Stage Manager

Bella Kelaidi

Is-Reolwr Llwyfan

Assistant Stage Managers

Emma Gonzales

India Palmer

Cynorthwywyr Set

Set Assistants

Ellen Brown

Gabriel Contino

Amy Howard

Celine Kramer

Emilia Lamkin

Celeste Langree

Ania Levy

Lucy Ruff

Anton Schilbach

Chloe-Ann Stokes

Jasmine Veiga De Araujo

Laura Whitney

Cynorthwywydd Cynllunio

Design Assistant

Emily Warman

Cyfathrebydd Golygfaol

Scenic Communicator

Jasmine Veiga De Araujo

Cynorthwywyr Gwisg

Costume Assistants

Elizabeth Doody

Vada Baldwin

Technegwyr

Technicians

Stephen Bradley

Abbie Philpott

Erin Ramsey

Technegydd Lleoliad

Venue Technician

James Stevenson

Cefnogaeth Llais

Voice Support

Louisa Clarke

Goruchwylywyr

Supervisors

Ian Barnard

Ange John

Laura Martin

Katy Morrison

Alison Palmer

YMWADIAD: Cafodd y cynhyrchiad yma ei greu trwy arsylwi cyfyngiadau Covid-19 er mwyn lles a diogelwch y cast a'r criw. Am unrhyw ymholiadau sy'n ymwneud â chanllawiau a rhagofalon, cysylltwch â info@rwcmd.ac.uk os gwelwch yn dda.

DISCLAIMER: This production was made observing Covid-19 restrictions for the safety of all cast and crew. For any queries regarding guidelines and precautions observed, please contact info@rwcmd.ac.uk.

STAFF CBCDC RWCMD STAFF

ACTIO A THEATR GERDD ACTING & MUSICAL THEATRE

Jonathan Munby
Claire Brown
Vivien Care
Louisa Clarke
Jamie Garven
Patricia Logue
Kevin McCurdy
Frances Newman
Suzanne Packer
Eryl Huw Phillips
Pip Reeves
Simon Reeves

SWYDDFA DRAMA DRAMA OFFICE

Heather Davies
Sian Jones
Mitzy Wilson

CYNHYRCHU A CHYNLLUNIO PRODUCTION & DESIGN

Rorie Brophy
Rob Clarke
Sean Crowley
Allie Edge
Ian Evans
Lucy Hall
Emma Hele
Daz James
Mike Robinson
Jen Rowlands

DIGWYDDIADAU EVENTS

Laura Avery
Tracey Bishop
Will Darke
Chris Flavin
Naomi Griffiths
Matt Jones
Penny King
Leigh Kirk-Harris
Joanna Kyiet
Jo Marriott
Steve McEvoy
Lisa Morris
Rebecca Rigby
Matt Rogerson
Janet Smith
Cerys Wyn-Williams

UWCH DÏM RHEOLI SENIOR MANAGEMENT TEAM

Professor Helena Gaunt
Mark Davies
Sean Crowley
Jonathan Munby
Kevin Price
Tim Rhys-Evans
Kate Stokes Davies
Lucy Stout
Brian Weir

BWRDD CYFARWYDDWYR BOARD OF DIRECTORS

Professor Helena Gaunt
John Derrick (Chair)
Manon Antoniazzi LVO
Mario Ferrelli
Natasha Hale
Lucy Hall
Julie Lydon OBE
Aled Miles
Roger Munnings
Jemma Terry
Nia Thomas

Gyda diolch i'r holl staff ar draws
y Coleg sydd wedi cynorthwyo
i lwyfannu'r cynrychiadau hyn.

With thanks to all staff across the
College who have assisted in the
staging of these productions.

YNGLŶN Â CHWMNI RICHARD BURTON ABOUT THE RICHARD BURTON COMPANY

The Richard Burton Company is the Royal Welsh College of Music & Drama's own in-house theatre company.

It is made up of undergraduate and postgraduate actors, stage managers, theatre designers and musical theatre performers. As one of Wales' most prolific repertory companies, the Richard Burton Company stages around fifteen productions each year ranging from classic plays to contemporary drama, new writing and musical theatre.

This amateur production is presented by arrangement with **Josef Weinberger Limited**.

The videotaping or making of electronic or other audio and/or visual recordings or streams of this production is strictly prohibited, a violation of United Kingdom Copyright, Designs and Patents Act 1988 and an actionable offense.

Cefnogir drama yng Ngholeg Brenhinol Cerdd a Drama Cymru gan: Drama at the Royal Welsh College of Music & Drama is supported by:

Cwmni Theatr Mewnol Coleg Brenhinol Cerdd a Drama Cymru yw Cwmni Richard Burton.

Mae'n cynnwys actorion, rheolwyr llwyfan, cynllunwyr theatr a pherfformwyr theatre gerdd israddedig ac ôl-radd. Fel un o theatrau cwmni mwyaf toreithiog Cymru, bydd Cwmni Richard Burton yn llwfanu pymtheg cynhyrchiad bob blwyddyn, yn amrywio o ddramâu clasurol i waith cyfoes, ysgrifennu newydd a theatr gerdd.

Cyflwynir y cynhyrchiad amatur hwn trwy drefniant gyda **Josef Weinberger Limited**.

Gwaherddir gwneud tapiau fideo neu recordiadau electronig neu recordiadau sain a/neu weledol eraill o ffyrdiau'r cynhyrchiad hwn - byddai hynny'n torri Deddf Hawlfraint, Dyluniadau a Phatentau 1988 y Deyrnas Unedig ac yn drosedd gyfreithadwy.

The Carne Trust, The Hodge Foundation, Simon Gibson Charitable Trust, Leverhulme Trust, Gregory Nasmyth and the Hon. Samantha Rowe-Beddoe, Spielman Charitable Trust, Peter and Janet Swinburn, the late Neil and Mary Webber, The Mosawi Foundation, Catherine Zeta-Jones CBE FRWCMD, Sean Mathias and the late Jackie Skarvellis.